

NOTES:

1. SUBSTRATE MATERIAL:
N-BK7
2. COATING (APPLY ACROSS CLEAR APERTURE)

S1 & S2: VIS 0°

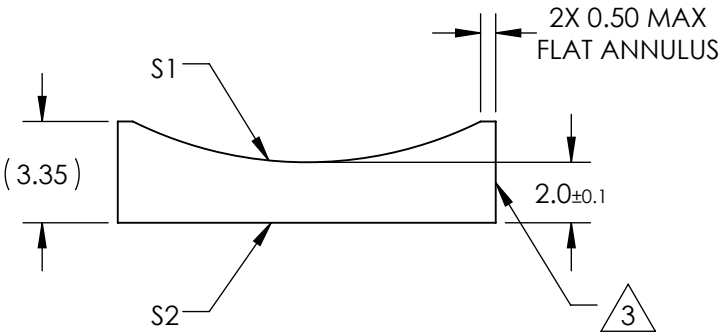
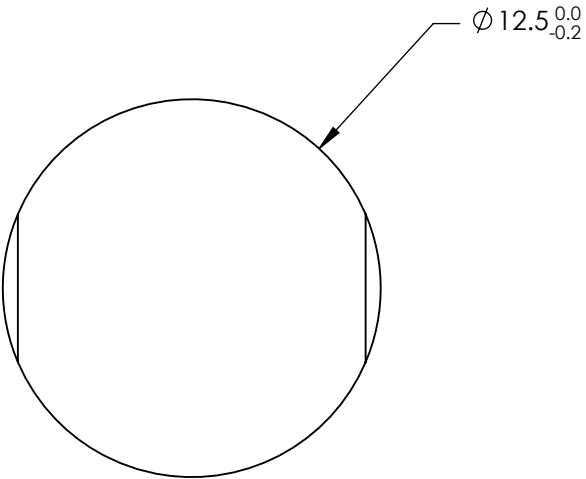
R(avg) ≤0.4% @ 425 - 675nm




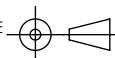
3. FINE GROUND SURFACE

4. POWER, IRREGULARITY, AND SURFACE QUALITY
SPECIFICAIONS APPLY ACROSS CLEAR APERTURE
5. RoHS COMPLIANT

**FOR INFORMATION ONLY:
DO NOT MANUFACTURE
PARTS TO THIS DRAWING**



SPECIFICATIONS SUBJECT TO CHANGE WITHOUT NOTICE
DIMENSIONS ARE FOR REFERENCE ONLY

REV. A	S1	S2	 Edmund Optics®					
SHAPE	CONVEX	PLANO						
RADIUS	-12.92	∞	EFL	-25	BFL	-26.32		
SURFACE QUALITY	60-40	60-40			TITLE	12.5mm DIA X -25mm FL VIS 0° COATED, CYLINDER LENS		
CLEAR APERTURE	Ø11.50	Ø11.50						
COATING APERTURE	Ø11.50	Ø11.50	ALL DIMS IN		mm	DWG NO	69794	SHEET 1 OF 1
BEVEL	PROTECTED AS NEEDED	PROTECTED AS NEEDED						