

NOTES:

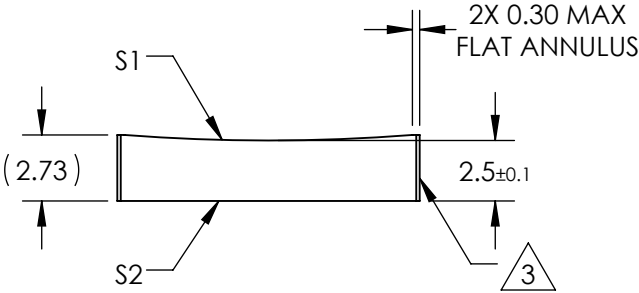
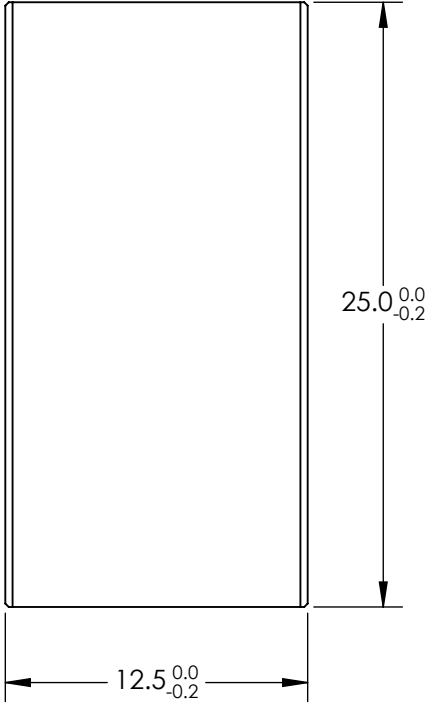
- 1. SUBSTRATE MATERIAL:
N-BK7
- 2. COATING (APPLY ACROSS CLEAR APERTURE)

S1 & S2: NIR I


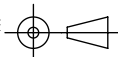
R(avg) ≤0.5% @ 600 - 1050nm

- 3. FINE GROUND SURFACE
- 4. POWER, IRREGULARITY, AND SURFACE QUALITY
SPECIFICAIONS APPLY ACROSS CLEAR APERTURE
- 5. RoHS COMPLIANT

**FOR INFORMATION ONLY:
DO NOT MANUFACTURE
PARTS TO THIS DRAWING**



SPECIFICATIONS SUBJECT TO CHANGE WITHOUT NOTICE
DIMENSIONS ARE FOR REFERENCE ONLY

REV. A	S1	S2	EFL	-150	 Edmund Optics®		
SHAPE	CONVEX	PLANO	BFL	-151.65			
RADIUS	77.52	∞			TITLE	12.5mm H X 25mm L X -150mm FL NIR I COATED, CYLINDER LENS	
SURFACE QUALITY	60-40	60-40					
CLEAR APERTURE	11.50 X 24.00	11.50 X 24.00	ALL DIMS IN		DWG NO	69822	
COATING APERTURE	11.50 X 24.00	11.50 X 24.00					
BEVEL	PROTECTED AS NEEDED	PROTECTED AS NEEDED	mm				SHEET 1 OF 1