

NOTES:

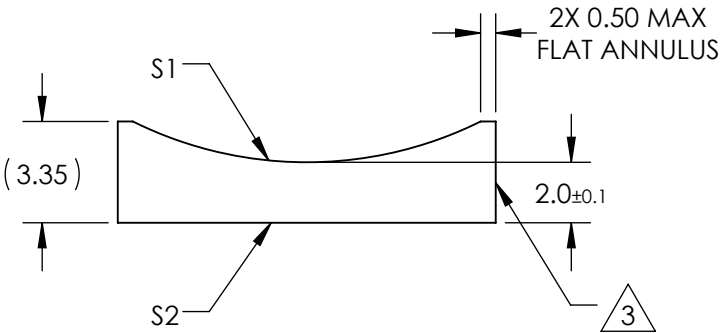
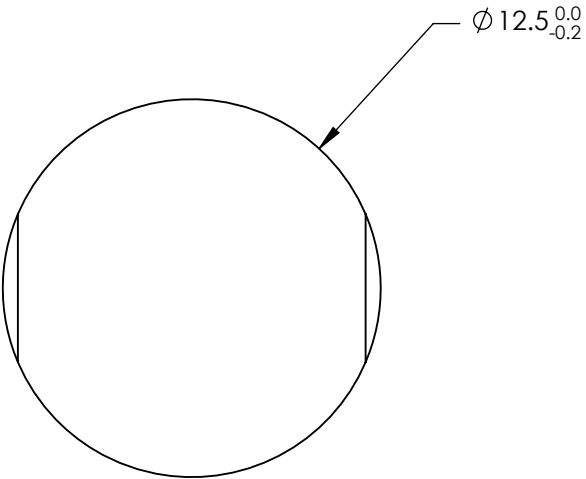
1. SUBSTRATE MATERIAL:
N-BK7
2. COATING (APPLY ACROSS CLEAR APERTURE)

S1 & S2: VIS-NIR

R(abs) $\leq 0.25\%$ @ 880nm
R(avg) $\leq 1.25\%$ @ 400 - 870nm
R(avg) $\leq 1.25\%$ @ 890 - 1000nm


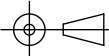
3. FINE GROUND SURFACE

4. POWER, IRREGULARITY, AND SURFACE QUALITY
SPECIFICATIONS APPLY ACROSS CLEAR APERTURE
5. RoHS COMPLIANT



**FOR INFORMATION ONLY:
DO NOT MANUFACTURE
PARTS TO THIS DRAWING**

SPECIFICATIONS SUBJECT TO CHANGE WITHOUT NOTICE
DIMENSIONS ARE FOR REFERENCE ONLY

| | | | | | | | |
|------------------|---------------------|---------------------|---|----|--------|--|-----------------|
| REV. A | S1 | S2 | <div><div>EFL</div><div>-25</div></div> <div><div>BFL</div><div>-26.32</div></div> <div><div> Edmund Optics®</div></div> | | | | |
| SHAPE | CONVEX | PLANO | | | | | |
| RADIUS | -12.92 | ∞ | | | | | |
| SURFACE QUALITY | 60-40 | 60-40 | <div><div>THIRD ANGLE PROJECTION</div><div></div></div> | | TITLE | 12.5mm DIA X -25mm FL VIS-NIR COATED, CYLINDER LENS | |
| CLEAR APERTURE | Ø11.50 | Ø11.50 | | | | | |
| COATING APERTURE | Ø11.50 | Ø11.50 | | | | | |
| BEVEL | PROTECTED AS NEEDED | PROTECTED AS NEEDED | ALL DIMS IN | mm | DWG NO | 69834 | SHEET 1 OF 1 |