

NOTES:

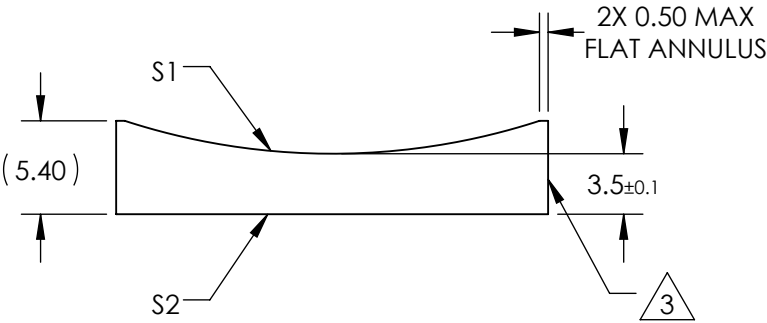
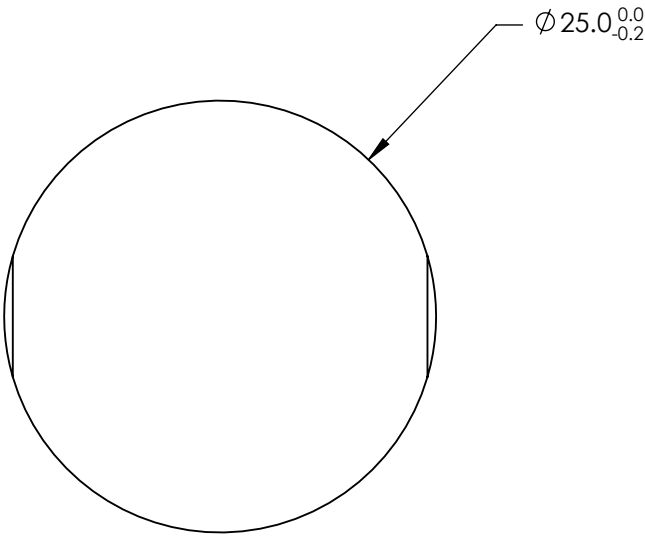
1. SUBSTRATE MATERIAL:
N-BK7
2. COATING (APPLY ACROSS CLEAR APERTURE)

S1 & S2: VIS-NIR

R(abs) $\leq 0.25\%$ @ 880nm
R(avg) $\leq 1.25\%$ @ 400 - 870nm
R(avg) $\leq 1.25\%$ @ 890 - 1000nm


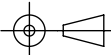
3. FINE GROUND SURFACE

4. POWER, IRREGULARITY, AND SURFACE QUALITY
SPECIFICATIONS APPLY ACROSS CLEAR APERTURE
5. RoHS COMPLIANT



**FOR INFORMATION ONLY:
DO NOT MANUFACTURE
PARTS TO THIS DRAWING**

SPECIFICATIONS SUBJECT TO CHANGE WITHOUT NOTICE
DIMENSIONS ARE FOR REFERENCE ONLY

REV. A	S1	S2	<div>EFL-75</div> <div>BFL-77.31</div> <div> Edmund Optics®</div>				
SHAPE	CONVEX	PLANO					
RADIUS	-38.76	∞	<div>THIRD ANGLE PROJECTION</div> <div>TITLE</div> <div>25mm DIA X -75mm FL VIS-NIR COATED, CYLINDER LENS</div>				
SURFACE QUALITY	60-40	60-40					
CLEAR APERTURE	Ø24.00	Ø24.00	<div>ALL DIMS INmm</div> <div>DWG NO</div> <div>69844</div> <div>SHEET 1 OF 1</div>				
COATING APERTURE	Ø24.00	Ø24.00					
BEVEL	PROTECTED AS NEEDED	PROTECTED AS NEEDED					