

NOTES:

1. SUBSTRATE MATERIAL:
N-BK7
2. COATING (APPLY ACROSS CLEAR APERTURE)

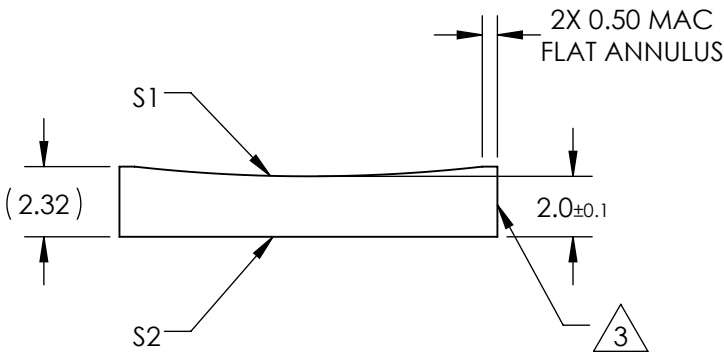
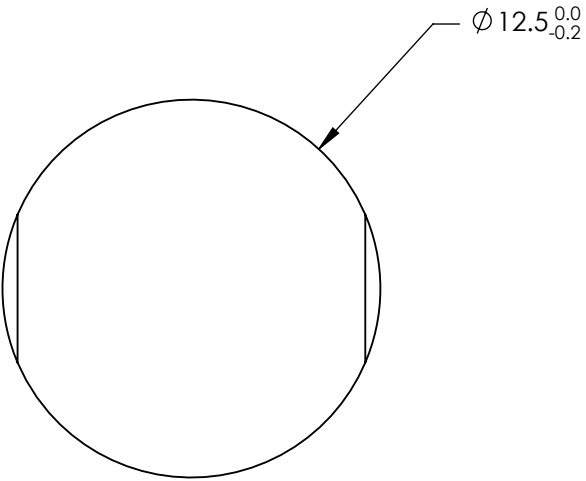
S1 & S2: VIS-NIR

R(abs) $\leq 0.25\%$ @ 880nm
R(avg) $\leq 1.25\%$ @ 400 - 870nm
R(avg) $\leq 1.25\%$ @ 890 - 1000nm

3. FINE GROUND SURFACE


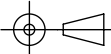
4. POWER, IRREGULARITY, AND SURFACE QUALITY
SPECIFICATIONS APPLY ACROSS CLEAR APERTURE

5. RoHS COMPLIANT



**FOR INFORMATION ONLY:
DO NOT MANUFACTURE
PARTS TO THIS DRAWING**

SPECIFICATIONS SUBJECT TO CHANGE WITHOUT NOTICE
DIMENSIONS ARE FOR REFERENCE ONLY

REV. A	S1	S2	 Edmund Optics®				
SHAPE	CONVEX	PLANO					
RADIUS	-51.68	∞	EFL	-100	BFL	-101.35	
SURFACE QUALITY	60-40	60-40			TITLE	12.5mm DIA X -100mm FL VIS-NIR COATED, CYLINDER LENS	
CLEAR APERTURE	Ø11.50	Ø11.50					
COATING APERTURE	Ø11.50	Ø11.50					
BEVEL	PROTECTED AS NEEDED	PROTECTED AS NEEDED	ALL DIMS IN	mm	DWG NO	69836	SHEET 1 OF 1