

NOTES:

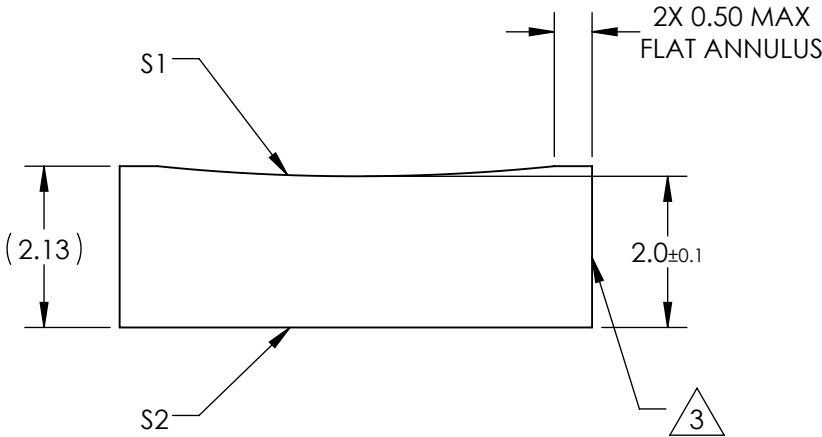
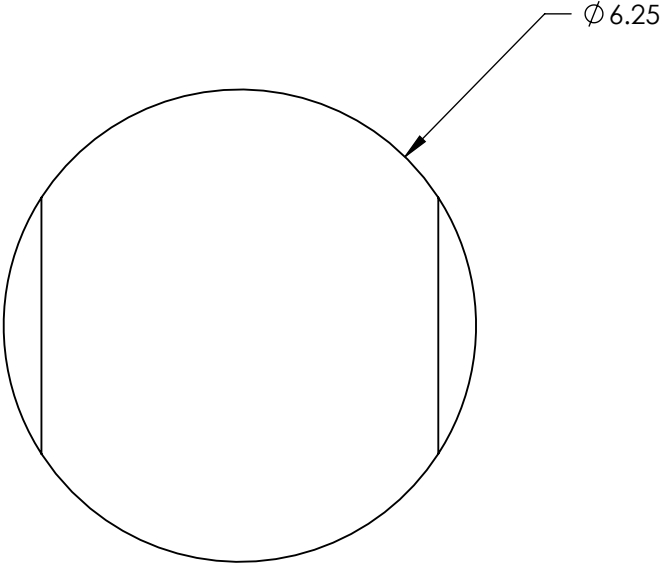
1. SUBSTRATE MATERIAL:  
N-BK7
2. COATING (APPLY ACROSS CLEAR APERTURE)  
  
S1 & S2: MgF2  
  
R(avg)  $\leq 1.75\%$  @ 400 - 700nm




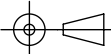
FINE GROUND SURFACE

4. POWER, IRREGULARITY, AND SURFACE QUALITY  
SPECIFICAIONS APPLY ACROSS CLEAR APERTURE
5. RoHS COMPLIANT

**FOR INFORMATION ONLY:  
DO NOT MANUFACTURE  
PARTS TO THIS DRAWING**



SPECIFICATIONS SUBJECT TO CHANGE WITHOUT NOTICE  
DIMENSIONS ARE FOR REFERENCE ONLY

REV. A	S1	S2					
SHAPE	CONVEX	PLANO	EFL	-50	 Edmund Optics®		
RADIUS	-25.84	∞	BFL	-51.32			
SURFACE QUALITY	60-40	60-40			TITLE	6.25mm DIA X -50mm FL MgF2 COATED, CYLINDER LENS	
CLEAR APERTURE	Ø5.25	Ø5.25					
COATING APERTURE	Ø5.25	Ø5.25					
BEVEL	PROTECTED AS NEEDED	PROTECTED AS NEEDED	ALL DIMS IN	mm	DWG NO	48374	SHEET 1 OF 1