

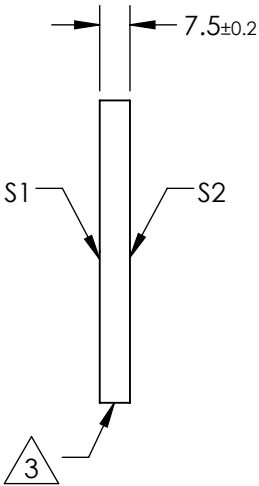
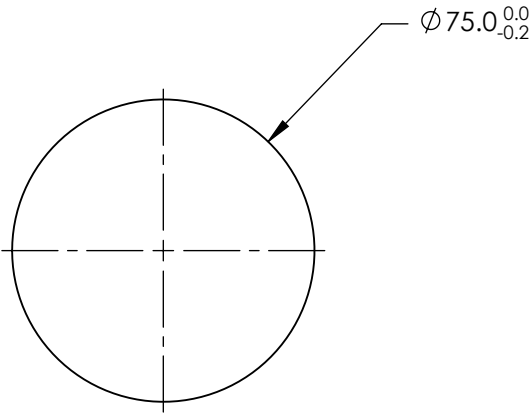
NOTES:

1. SUBSTRATE MATERIAL:
Fused Silica
2. COATING (APPLY ACROSS CLEAR APERTURE)

S1: Protected Silver
R(avg) >98% @ 450 - 2000nm
R(avg) >98% @ 2000 - 10,000nm
S2: NONE

 FINE GROUND SURFACE

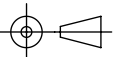
4. PARALLELISM: 30 ARCSEC
5. RoHS COMPLIANT




**FOR INFORMATION ONLY:
DO NOT MANUFACTURE
PARTS TO THIS DRAWING**

SPECIFICATIONS SUBJECT TO CHANGE WITHOUT NOTICE
DIMENSIONS ARE FOR REFERENCE ONLY

REV. A	S1	S2
SHAPE	PLANO	PLANO
SURFACE QUALITY	20-10	N/A
SURFACE FLATNESS	$\lambda/10$	COMMERICAL POLISH
CLEAR APERTURE	90%	N/A
BEVEL	PROTECTIVE AS NEEDED	PROTECTIVE AS NEEDED

THIRD ANGLE
PROJECTION 

ALL DIMS IN mm

 **Edmund Optics®**

TITLE	75mm Diameter Silver Coated, $\lambda/10$ Mirror		
DWG NO	84445	SHEET 1 OF 1	