

NOTES:

- 1. SUBSTRATE
SAPPHIRE (AI2O3)
- 2. SURFACE S2 TO BE PARALLEL WITH SURFACE S1 TO WITHIN 3.5 ARCMIN
- 3. COATING (APPLY ACROSS CLEAR APERTURE)

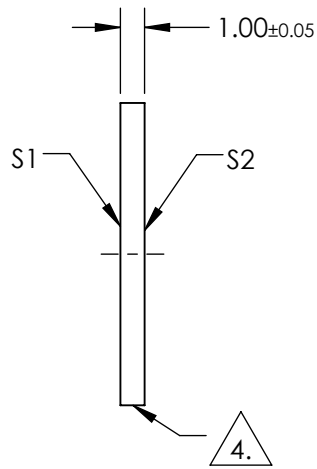
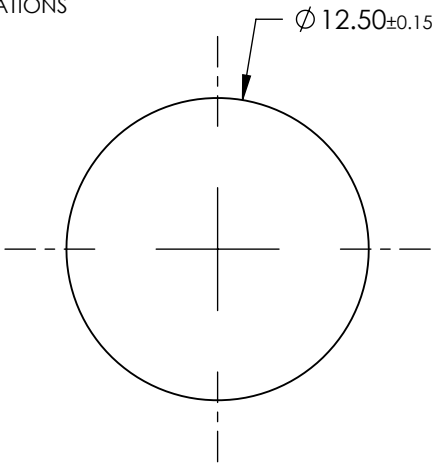
S1: ¼ WAVE MgF2 @ 550nm
R(AVG) < 1.75% FROM 400-700nm (N-BK7)

S2: ¼ WAVE MgF2 @ 550nm
R(AVG) < 1.75% FROM 400-700nm (N-BK7)

3. FINE GRIND SURFACE

- 4. POWER, IRREGULARITY, AND SURFACE QUALITY SPECIFICATIONS
APPLY ACROSS CLEAR APERTURE
- 5. ROHS COMPLIANT

FOR INFORMATION ONLY:
DO NOT MANUFACTURE
PARTS TO THIS DRAWING



	S1	S2
SHAPE	PLANO	PLANO
CLEAR APERTURE	Ø11.25	Ø11.25
SURFACE FLATNESS	2λ	2λ
SURFACE ROUGHNESS	0.1 MICRONS PER INCH	0.1 MICRONS PER INCH
SURFACE QUALITY	80-50	80-50
BIREFRINGENCE (n _o -n _e)	0.008	0.008
BEVEL	PROTECTIVE AS NEEDED	PROTECTIVE AS NEEDED

SPECIFICATIONS SUBJECT TO CHANGE WITHOUT NOTICE
DIMENSIONS ARE FOR REFERENCE ONLY

 Edmund Optics®

THIRD ANGLE PROJECTION 		TITLE	12.5mm DIAMETER, MgF2 COATED SAPPHIRE WINDOW	
ALL DIMS IN	mm	DWG NO	36202	SHEET 1 OF 1