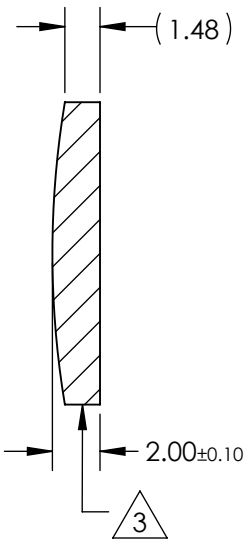
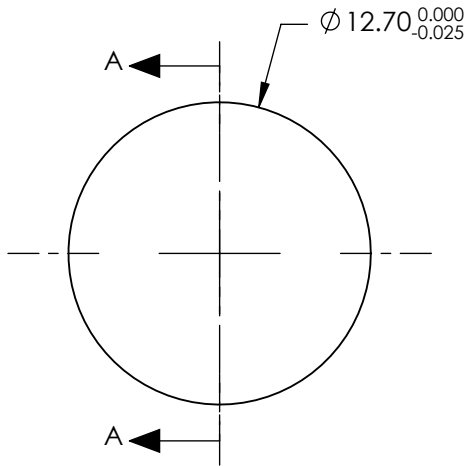


NOTES:

1. SUBSTRATE MATERIAL:  
N-BK7
2. COATING (APPLY ACROSS CLEAR APERTURE)  
S1 & S2:  
NIR II  
 $R(ABS) \leq 1.5\%$  FROM 750-800nm @ 0° AOI  
 $R(ABS) \leq 1.0\%$  FROM 800-1550nm @ 0° AOI  
 $R(AVG) \leq 0.7\%$  FROM 750-1550nm @ 0° AOI
3. FINE GROUND SURFACE
4. POWER, IRREGULARITY, AND SURFACE QUALITY  
SPECIFICAIONS APPLY ACROSS CLEAR APERTURE
5. FOCAL LENGTH TOLERANCE:  $\pm 1\%$
6. PLANO AXIS WEDGE TOLERANCE:  $< 5$  ARCMIN  
POWER AXIS WEDGE TOLERANCE:  $< 5$  ARCMIN
7. RoHS COMPLIANT


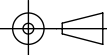


SECTION A-A

**FOR INFORMATION ONLY:  
DO NOT MANUFACTURE  
PARTS TO THIS DRAWING**

REV. A	S1	S2
SHAPE	CONVEX	PLANO
RADIUS	38.76	$\infty$
SURFACE QUALITY	40 - 20	40 - 20
CLEAR APERTURE	$\varnothing 11.43$	$\varnothing 11.43$
COATING APERTURE	$\varnothing 11.43$	$\varnothing 11.43$
POWER AT 632.8nm	1.5 WAVES PV	1.5 WAVES PV
IRREGULARITY AT 632.8nm	0.25 WAVE PV	0.25 WAVE PV
BEVEL	PROTECTIVE AS NEEDED	PROTECTIVE AS NEEDED

SPECIFICATIONS SUBJECT TO CHANGE WITHOUT NOTICE  
DIMENSIONS ARE FOR REFERENCE ONLY

EFL	75mm	 <b>Edmund Optics®</b>		
BFL	73.68mm			
	TITLE	LENS CYL SHAPING 12.7mm DIA. X 75mm FL NIR II		
		DWG NO	34628	SHEET 1 OF 1
ALL DIMS IN	mm			