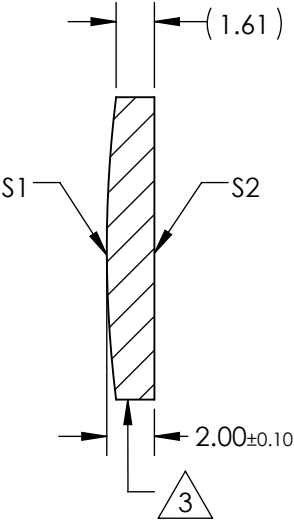
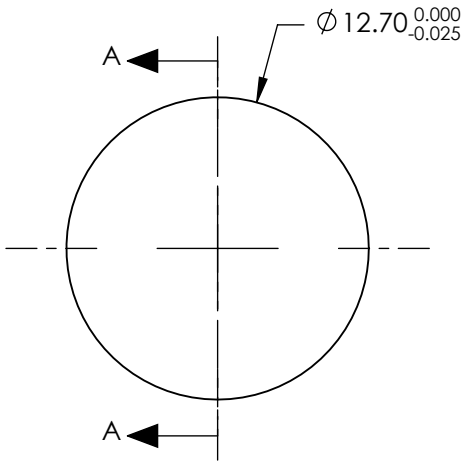


NOTES:

1. SUBSTRATE MATERIAL:  
N-BK7
2. COATING (APPLY ACROSS CLEAR APERTURE)  
S1 & S2: NONE

3. FINE GROUND SURFACE

4. POWER, IRREGULARITY, AND SURFACE QUALITY  
SPECIFICAIONS APPLY ACROSS CLEAR APERTURE
5. FOCAL LENGTH TOLERANCE:  $\pm 1\%$
6. PLANO AXIS WEDGE TOLERANCE:  $< 5$  ARCMIN  
POWER AXIS WEDGE TOLERANCE:  $< 5$  ARCMIN
7. RoHS COMPLIANT


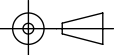


SECTION A-A

**FOR INFORMATION ONLY:  
DO NOT MANUFACTURE  
PARTS TO THIS DRAWING**

REV. A	S1	S2
SHAPE	CONVEX	PLANO
RADIUS	51.68	$\infty$
SURFACE QUALITY	40 - 20	40 - 20
CLEAR APERTURE	Ø11.43	Ø11.43
COATING APERTURE	N/A	N/A
POWER AT 632.8nm	1.5 WAVES PV	1.5 WAVES PV
IRREGULARITY AT 632.8nm	0.25 WAVE PV	0.25 WAVE PV
BEVEL	PROTECTIVE AS NEEDED	PROTECTIVE AS NEEDED

SPECIFICATIONS SUBJECT TO CHANGE WITHOUT NOTICE  
DIMENSIONS ARE FOR REFERENCE ONLY

EFL	100mm	 <b>Edmund Optics®</b>		
BFL	98.68mm			
THIRD ANGLE PROJECTION 	TITLE	LENS CYL SHAPING 12.7mm DIA. X 100mm FL UNCTD		
		DWG NO	34608	SHEET 1 OF 1
ALL DIMS IN	mm			