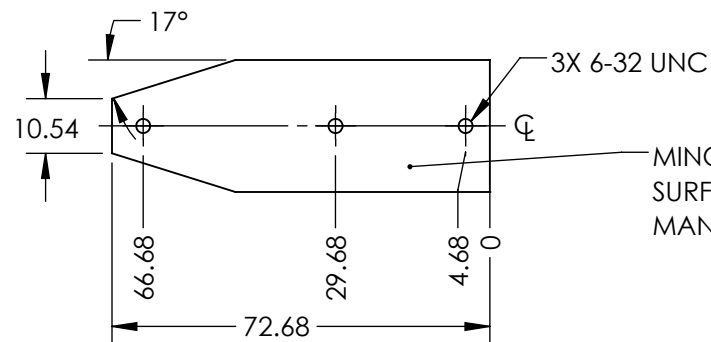
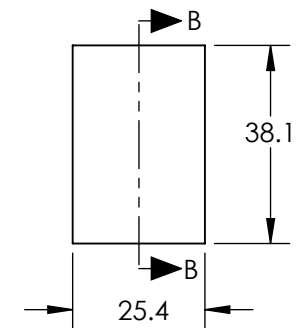
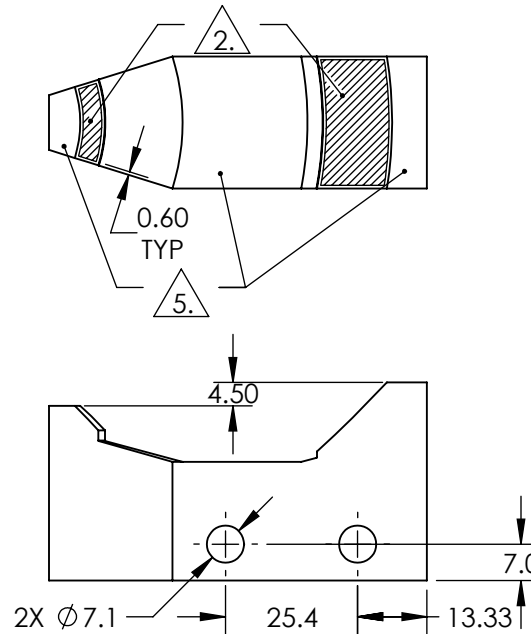
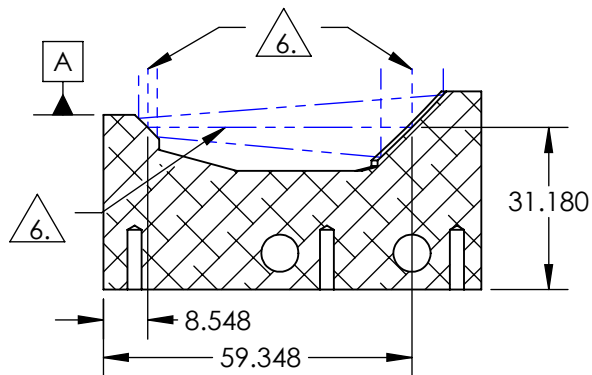


NOTES:

1. SUBSTRATE: ALUMINUM 6061-T6
2. COATING
PROTECTED ALUMINUM

R(AVG) > 85% FROM 400-700nm
R(AVG) > 90% FROM 400-2,000nm
3. SURFACE ROUGHNESS: <50 Å RMS
4. SYSTEM SHALL BE ALIGNED TO DATUM A
WITH REFLECTED WAVEFRONT ERROR OF \leq
1/10 WAVE AT 632.8 nm FOR Ø1mm INPUT
BEAM.
5. INTEGRATED ALIGNMENT FLATS
6. OPTICAL CENTER LINE
7. RoHS COMPLIANT



MINOR SCRATCHES ON THE NON-OPTICAL SURFACE MIGHT BE PRESENT DUE TO THE MANUFACTURING PROCESS.

**FOR INFORMATION ONLY:
DO NOT MANUFACTURE
PARTS TO THIS DRAWING**

SPECIFICATIONS SUBJECT TO
CHANGE WITHOUT NOTICE
DIMENSIONS ARE FOR
REFERENCE ONLY

EO® Edmund Optics®

| | |
|--------|----------------------|
| REV. A | S1 |
| SHAPE | MONOLITHIC |
| BEVEL | PROTECTIVE AS NEEDED |

| | | | | |
|---------------------------|--|--------|---|-----------------|
| THIRD ANGLE PROJECTION | | TITLE | 3X, Protected Aluminum Canopus™ Reflective Beam Expander | |
| | | DWG NO | 37194 | SHEET 1 OF 1 |