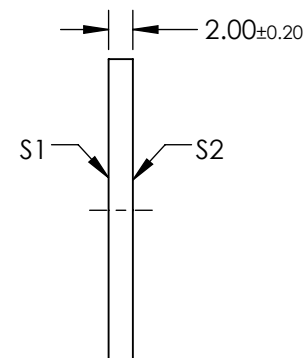
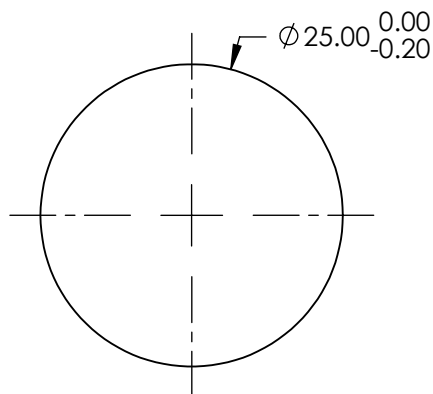
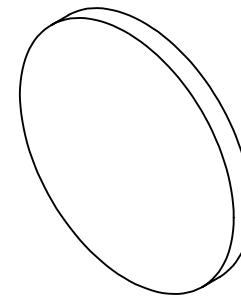


NOTES:

1. SUBSTRATE: B270
2. RoHS: COMPLIANT
3. SURFACE S2 TO BE PARALLEL TO SURFACE S1 TO WITHIN < 4 arcmin
4. S1 & S2:  
AR: Ravg <0.5% @ 400 - 700nm



**FOR INFORMATION ONLY:**  
**DO NOT MANUFACTURE**  
**PARTS TO THIS DRAWING**

SPECIFICATIONS SUBJECT TO CHANGE WITHOUT NOTICE  
DIMENSIONS ARE FOR REFERENCE ONLY

REV. A	
EXTINCTION RATIO	10000
OPERATING TEMPERATURE (°C)	-25 to +65
SURFACE FLATNESS	<1λ
TRANSMISSION	25% @ ±2% (for random polarization)



ALL DIMS IN

mm



**Edmund Optics**

TITLE

25mm DIA. HIGH PERFORMANCE LINEAR GLASS  
POLARIZER

DWG NO

47216

SHEET  
1 OF 1