

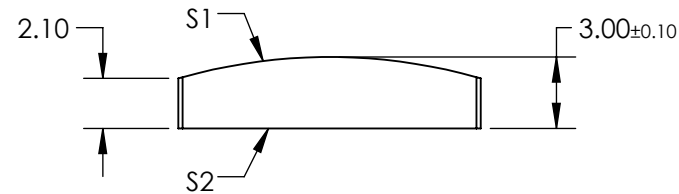
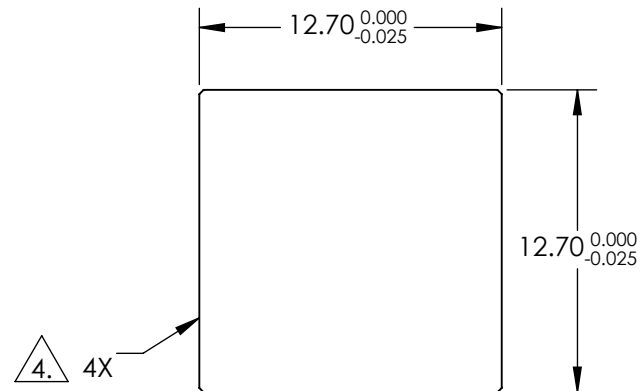
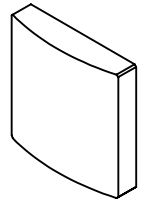
NOTES:

1. SUBSTRATE  
UV GRADE FUSED SILICA
2. CENTERING TOLERANCE:  
PLANO AXIS WEDGE: <3 ARCMIN  
POWER AXIS WEDGE: <4.5 ARCMIN  
AXIAL TWIST: <3 ARCMIN
3. COATING (APPLY ACROSS COATING APERTURE)  
S1 & S2: 355nm AR Coated  
R(ABS) < 0.25% @ 355nm @ 0° AOI

DAMAGE THRESHOLD  
PULSED: 7.5 J/cm², 20ns, 20 Hz @ 355nm

4. FINE GROUND SURFACE


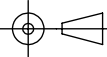
5. RoHS COMPLIANT



**FOR INFORMATION ONLY:  
DO NOT MANUFACTURE  
PARTS TO THIS DRAWING**

	S1	S2
SHAPE	CONVEX	PLANO
RADIUS	22.93	INFINITY
SURFACE QUALITY	20 - 10	20 - 10
CLEAR APERTURE	11.43 x 11.43	11.43 x 11.43
COATING APERTURE	11.70 x 11.70	11.70 x 11.70
POWER AT 632.8nm	1.50 WAVES	1.50 WAVES
IRREGULARITY AT 632.8nm	0.25 WAVES	0.25 WAVES
BEVEL	PROTECTIVE AS NEEDED	PROTECTIVE AS NEEDED

SPECIFICATIONS SUBJECT TO CHANGE WITHOUT NOTICE  
DIMENSIONS ARE FOR REFERENCE ONLY

EFL	50.00	 <b>Edmund Optics®</b>	<b>TITLE</b> BEAM SHAPING CYLINDER LENS, FUSED SILICA, 12.7 SQ X 50mm EFL, AR COATED	
BFL	47.95			
THIRD ANGLE PROJECTION		TITLE		
ALL DIMS IN	mm	DWG NO	37582	SHEET 1 OF 1