

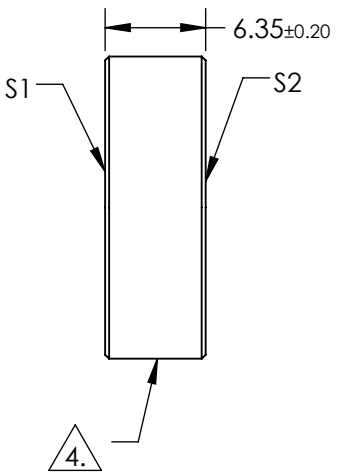
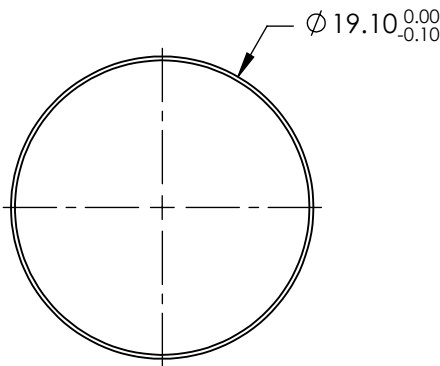
NOTES:

1. SUBSTRATE:
FUSED SILICA
2. S2 TO BE PARALLEL TO S1 TO WITHIN <3 ARCMINS
3. COATING (APPLY ACROSS COATING APERTURE)
S1 & S2: R(ABS) < 0.25% @ 266nm @ 0° AOI

DAMAGE THRESHOLD
PULSED: 3J/cm² @ 20ns, 20Hz @ 266nm


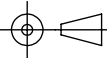
4. FINE GROUND SURFACE

5. CLEAR APERTURE AND COATING APERTURE ARE CENTERED ON SURFACE
6. POWER, IRREGULARITY, AND SURFACE QUALITY SPECIFICATIONS APPLY
ACROSS CLEAR APERTURE
7. ROHS COMPLIANT



**FOR INFORMATION ONLY:
DO NOT MANUFACTURE
PARTS TO THIS DRAWING**

SPECIFICATIONS SUBJECT TO CHANGE WITHOUT NOTICE
DIMENSIONS ARE FOR REFERENCE ONLY

	S1	S2	 Edmund Optics®			
SHAPE	PLANO	PLANO		TITLE	Ø19.1mm x 6.35mm 266nm FS LASER WINDOW	
SURFACE QUALITY	10-5	10-5		DWG NO	38921	
SURFACE FLATNESS	λ/10	λ/10				
MIN CLEAR APERTURE	Ø17.19	Ø17.19				
BEVEL	PROTECTIVE AS NEEDED	PROTECTIVE AS NEEDED	ALL DIMS IN	mm		
						SHEET 1 OF 1