

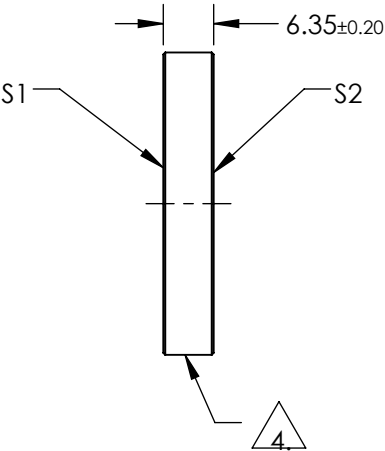
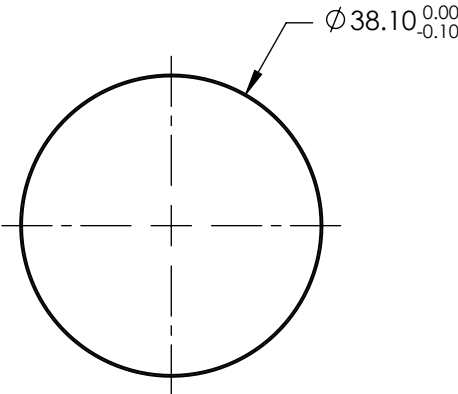
NOTES:

1. SUBSTRATE:
FUSED SILICA
2. S2 TO BE PARALLEL TO S1 TO WITHIN <3ARCMIN
3. COATING (APPLY ACROSS COATING APERTURE)
S1: EN AL
R(AVG) >95% from 450-650nm

S2: NONE

4. FINE GROUND SURFACE

5. CLEAR APERTURE AND COATING APERTURE ARE CENTERED ON SURFACE
6. SURFACE QUALITY SPECIFICATIONS APPLY ACROSS CLEAR APERTURE
7. ROHS: COMPLIANT



**FOR INFORMATION ONLY:
DO NOT MANUFACTURE
PARTS TO THIS DRAWING**

SPECIFICATIONS SUBJECT TO CHANGE WITHOUT NOTICE
DIMENSIONS ARE FOR REFERENCE ONLY

	S1	S2				
SHAPE	PLANO	PLANO				
SURFACE QUALITY	20-10	COMMERCIAL POLISH				
SURFACE FLATNESS	0.10 WAVE	N/A				
CLEAR APERTURE	Ø34.29	N/A				
COATING APERTURE	Ø37.10	N/A				
BEVEL	PROTECTIVE AS NEEDED	PROTECTIVE AS NEEDED				

THIRD ANGLE PROJECTION		TITLE		MIRROR FS 1/10 WAVE EN AL 38.1 DIA	
ALL DIMS IN	mm	DWG NO	39217	SHEET 1 OF 1	

Edmund Optics®