

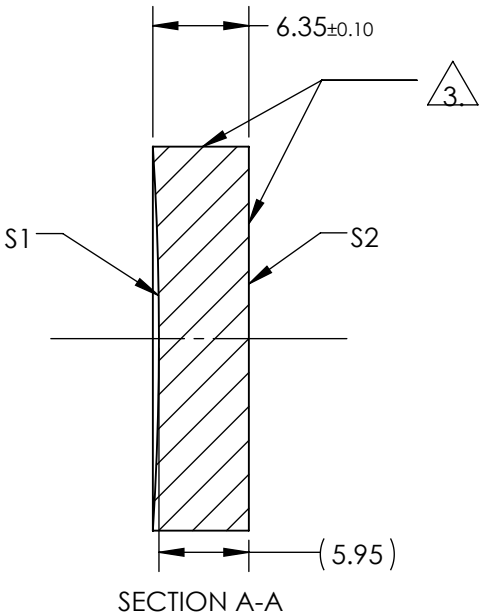
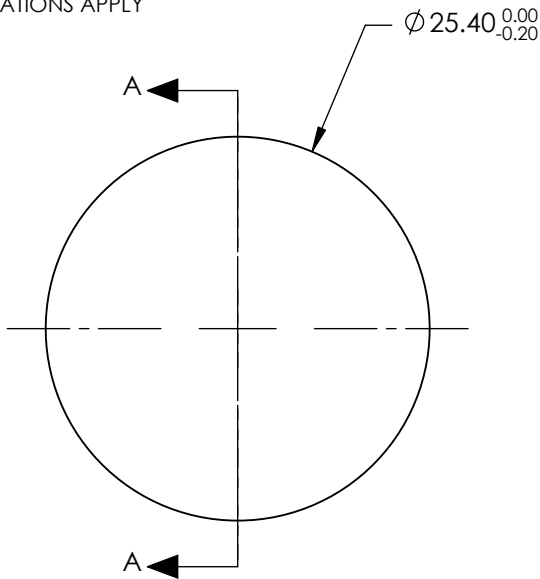
NOTES:

1. SUBSTRATE:
Fused Silica
2. COATING (APPLY ACROSS COATING APERTURE)
- S1: Laser Mirror (1064nm)
R(ABS) >99.80% @ 1064nm @ 0-45° AOI
- DAMAGE THRESHOLD,
PULSED: 15 J/cm² @ 1064nm, 20ns, 20Hz
- S2: NONE

3. FINE GRIND SURFACE

4. POWER, IRREGULARITY, AND SURFACE QUALITY SPECIFICATIONS APPLY
ACROSS CLEAR APERTURE
5. ROHS: COMPLIANT

**FOR INFORMATION ONLY:
DO NOT MANUFACTURE
PARTS TO THIS DRAWING**



	S1	S2
SHAPE	CONCAVE	PLANO
RADIUS	200.00	INFINITY
SURFACE QUALITY	20-10	N/A
CLEAR APERTURE	Ø22.86	N/A
COATING APERTURE	Ø22.86	N/A
POWER AT 632.8nm	2 RINGS	N/A
IRREGULARITY AT 632.8nm	0.10 WAVE	N/A
BEVEL	PROTECTIVE AS NEEDED	PROTECTIVE AS NEEDED

SPECIFICATIONS SUBJECT TO CHANGE WITHOUT NOTICE
DIMENSIONS ARE FOR REFERENCE ONLY

Edmund Optics®



ALL DIMS IN

mm

TITLE

25.4mm Dia. x 100mm EFL, 1064nm 0-45°,
Concave Laser Line Mirror

DWG NO

39969

SHEET
1 OF 1