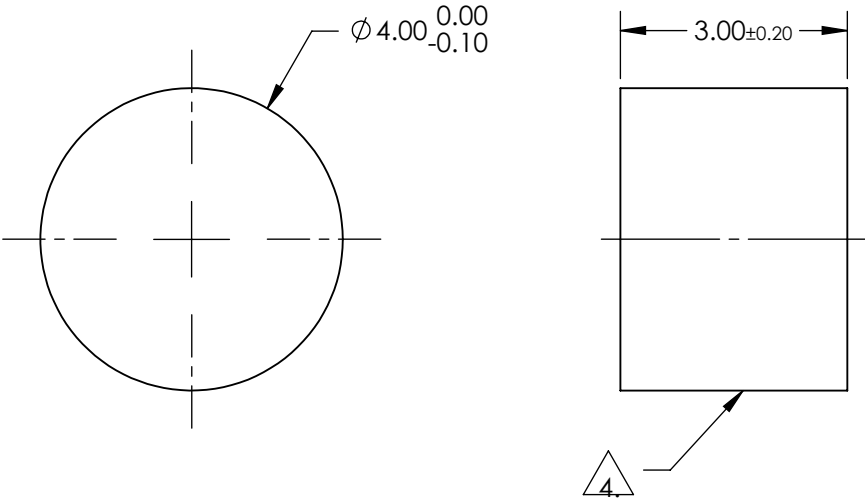



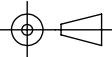
NOTES:

1. SUBSTRATE:  
FUSED SILICA
2. SURFACE S2 TO BE PARALLEL TO SURFACE S1 TO WITHIN <3 ARCMIN
3. COATING (APPLY ACROSS COATING APERTURE)  
S1: STANDARD HR  
R (ABS) > 99.8% @ 1030nm @ 0-45° AOI  
  
DAMAGE THRESHOLD,  
PULSED: 10 J/cm<sup>2</sup>, 20ns, 20 Hz @ 1030nm  
  
S2: NONE
4. FINE GROUND SURFACE
5. POWER, IRREGULARITY, SURFACE QUALITY, AND COATING SPECIFICATIONS  
APPLY ACROSS CLEAR APERTURE
6. ROHS COMPLIANT



**FOR INFORMATION ONLY:  
DO NOT MANUFACTURE  
PARTS TO THIS DRAWING**

SPECIFICATIONS SUBJECT TO CHANGE WITHOUT NOTICE  
DIMENSIONS ARE FOR REFERENCE ONLY

	S1	S2	 Edmund Optics®			
SHAPE	PLANO	PLANO				
SURFACE FLATNESS	0.10 WAVE	N/A		TITLE 4mm Dia. 1030nm 0-45°, Yb:YAG Laser Line Mirror		
SURFACE QUALITY	10-5	COMMERCIAL POLISH				
CLEAR APERTURE	90%	N/A				
BEVEL	PROTECTIVE AS NEEDED	PROTECTIVE AS NEEDED				
			ALL DIMS IN	mm	DWG NO	12628
					SHEET 1 OF 1	