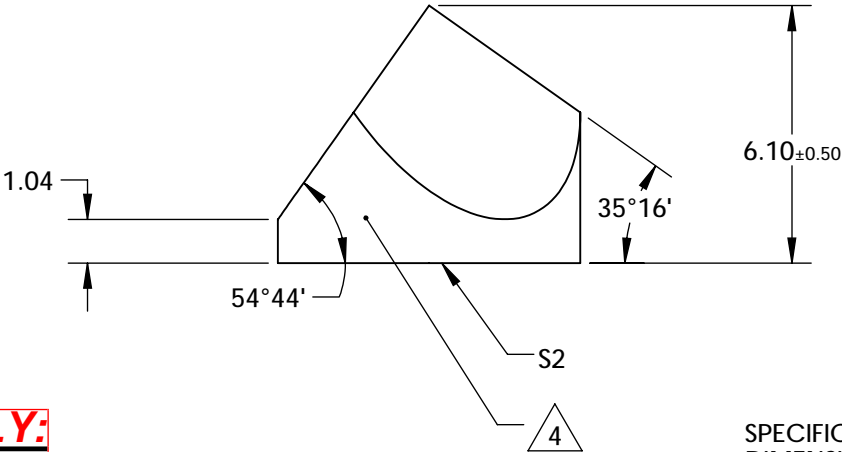
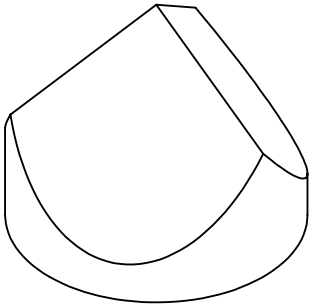
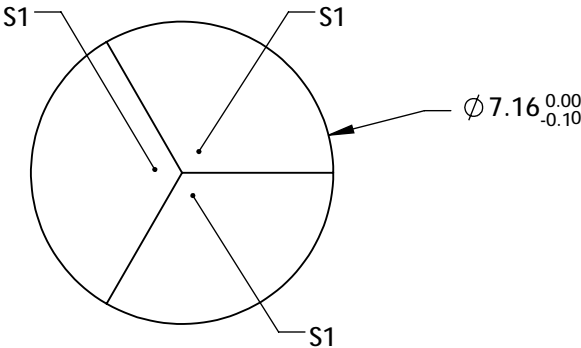


- NOTES:
1. SUBSTRATE: N-BK7
2. INCIDENT AND REFLECTED BEAMS SHALL BE PARALLEL TO WITHIN 10 ARCSEC
3. COATING (APPLY ACROSS COATING APERTURE)
- S1: SILVER WITH PROTECTED OVERCOAT (BLACK OVERPAINT)
- R(ABS) >97% FROM 400 - 2500nm @ 0° AOI
- R(AVG) >98% FROM 400 - 2500nm @ 0° AOI
- ENTRANCE: Rabs ≤1.5% @ 750 - 800nm,
- Rabs ≤1.0% @ 800 - 1550nm,
- Ravg ≤0.7% @ 750 - 1550nm
- S2: NIR II
- R(AVG) ≤ 1.5% @ 750 - 800nm
- R(AVG) ≤ 1.0% @ 800 - 1550nm
- R(AVG) ≤ 0.7% @ 750 - 1550nm

4. FINE GRIND SURFACE


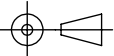
5. ROHS COMPLIANT

Note: Protective Overcoat Increases diameter by 30-60µm



FOR INFORMATION ONLY:
DO NOT MANUFACTURE
PARTS TO THIS DRAWING

SPECIFICATIONS SUBJECT TO CHANGE WITHOUT NOTICE
DIMENSIONS ARE FOR REFERENCE ONLY

REV A	S1 & S2	 Edmund Optics®			
SURFACE FLATNESS	$\lambda/8$		TITLE	7.16mm SILVER AND NIR II COATED, CORNER CUBE PRISM	
SURFACE QUALITY	60-40		DWG NO	12488	SHEET 1 OF 1
WAVELENGTH RANGE	750 - 1550 nm				
BEVEL	PROTECTED AS NEEDED				
		ALL DIMS IN	mm		