

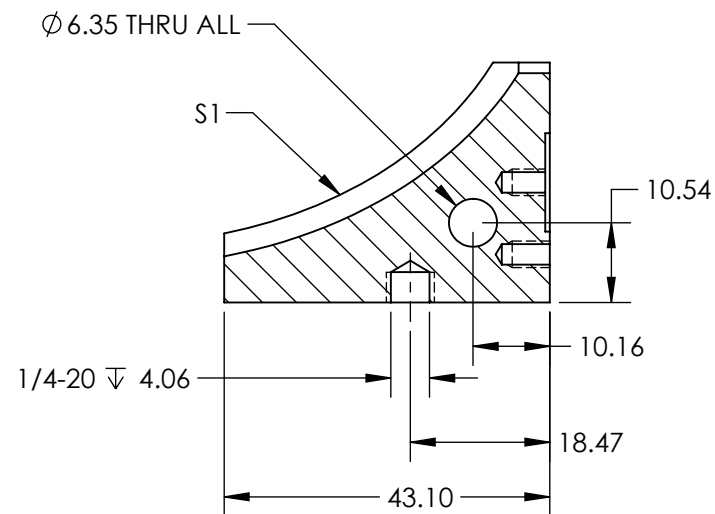
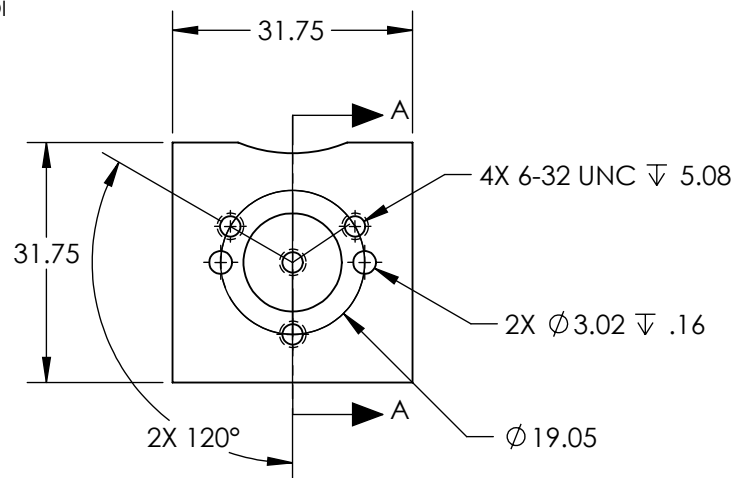
1. SUBSTRATE MATERIAL: ALUMINUM

2. FINISH (EXCEPT SURACES S1):  
BLACK ANODIZED

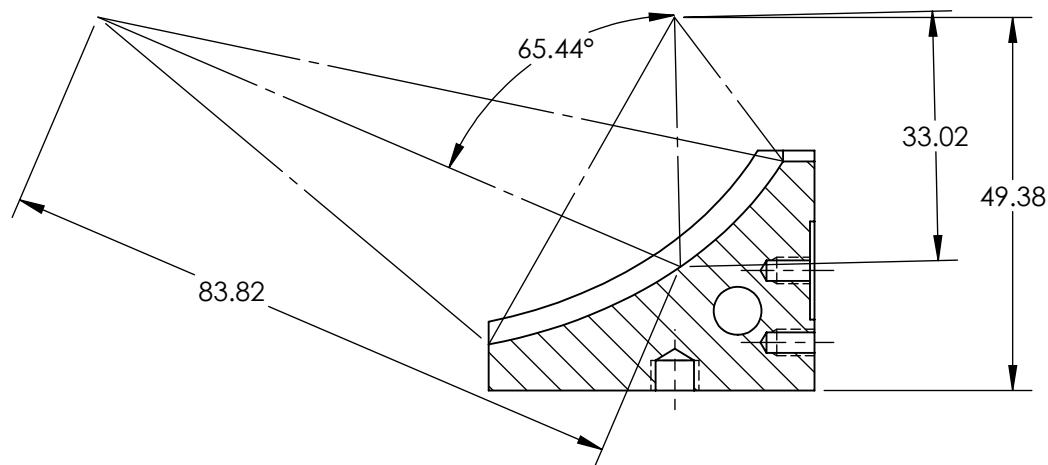
3. COATING (APPLY ACROSS CLEAR APERTURE)  
S1: PROTECTED ALUMINUM  
R(AVG) > 85% @ 400 - 700nm @ 0° AOI  
R(AVG) > 90% @ 400 - 2000nm @ 0° AOI

#### 4. RoHS: COMPLIANT

***FOR INFORMATION ONLY:***  
DO NOT MANUFACTURE  
PARTS TO THIS DRAWING



SECTION A-A



SPECIFICATIONS SUBJECT TO CHANGE WITHOUT NOTICE  
DIMENSIONS ARE FOR REFERENCE ONLY

	S1	S2
SHAPE	CONCAVE	PLANO
SURFACE ROUGHNESS (Å)	< 100	< 100
SURFACE QUALITY	60-40	60-40
MIN CLEAR APERTURE (%)	90	80
BEVEL MAX FACE	PROTECTIVE AS NEEDED	PROTECTIVE AS NEEDED



ALL DIMS IN

mm



TITLE

31.75mm Sq., 2.5X, Protected Aluminum Off-Axis Ellipsoidal Mirror

DWG NO

12497

SHEET  
1 OF 1