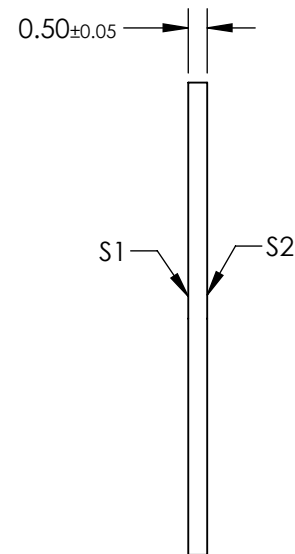
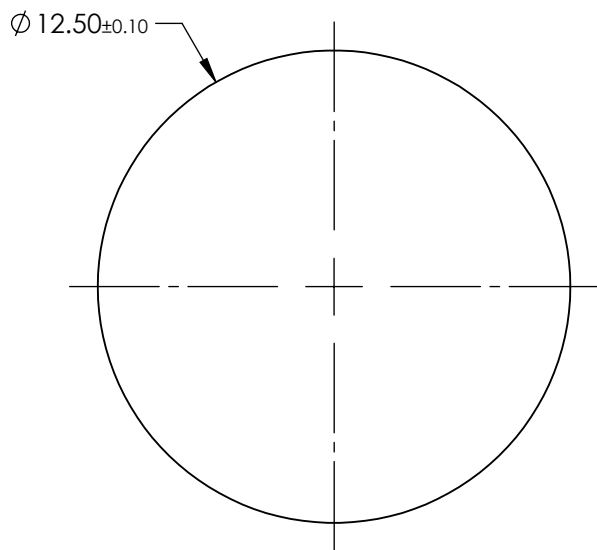


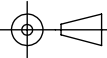
- NOTES:
- 1. MATERIAL:
BOROSILICATE GLASS CONTAINING ELONGATED SILVER
CRYSTALS
 - 2. COATING SPECIFICATION:
S1 & S2: BBAR COATING
R(AVG) < 0.4% @ 630 - 700nm @ 0° AOI
 - 3. EXTINCTION RATIO: >10,000:1
 - 4. RoHS: COMPLIANT



FOR INFORMATION ONLY:
DO NOT MANUFACTURE
PARTS TO THIS DRAWING

SPECIFICATIONS SUBJECT TO CHANGE WITHOUT NOTICE
DIMENSIONS ARE FOR REFERENCE ONLY

 **Edmund Optics®**

	S1	S2			TITLE	12.5mm Dia., 633nm, Corning Polarcor™ Glass Polarizer	
SHAPE	PLANO	PLANO					
SURFACE QUALITY	40-20	40-20	ALL DIMS IN		DWG NO	13610	
BEVEL MAX FACE	PROTECTIVE AS NEEDED	PROTECTIVE AS NEEDED	mm				SHEET 1 OF 1