

NOTES:
1. SUBSTRATE:
ACRYLIC V825

2. COATING

S1: NONE
S2: NONE

3. FOCAL LENGTH TOLERANCE: 1.5%

4. DESIGN WAVELENGTH (DWL): 550nm

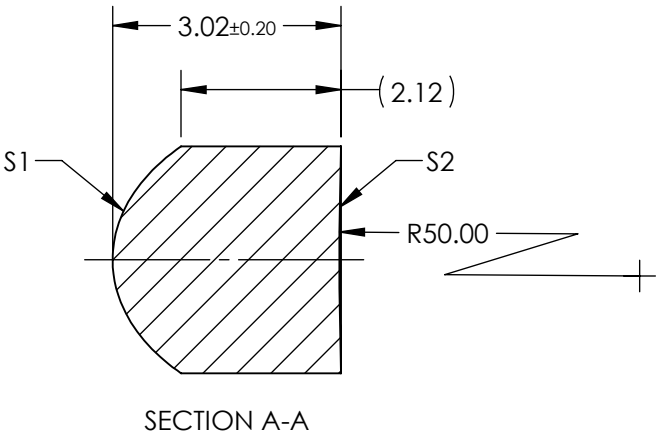
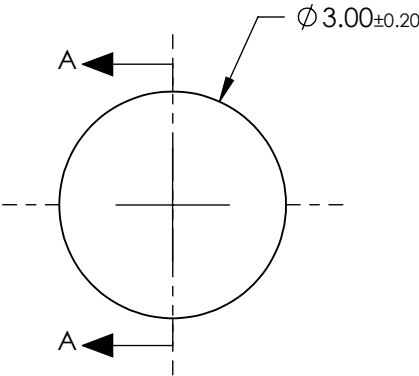
5. ASPHERIC SURFACE DESCRIBED BY (REF. COEFFICIENT TABLE)


$$Z_{ASPH}(Y) = \frac{C*Y^2}{1 + \sqrt{1 - (1+k)*C^2*Y^2}} + D*Y^2 + E*Y^4 + F*Y^6 + G*Y^8 + H*Y^{10} + J*Y^{12} + L*Y^{14}$$

6. RoHS COMPLIANT

7. RADIUS IS NOT CONTINUOUS DUE TO GATE ON S3 USED DURING MANUFACTURING.


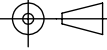
FOR INFORMATION ONLY:
DO NOT MANUFACTURE
PARTS TO THIS DRAWING



COEFFICIENT TABLE 	
COEFFICIENT	S1
C	-6.815703E-01
k	-5.127000E-01
D	0.000000E+00
E	-8.838000E-04
F	-1.244200E-04
G	1.496000E-05
H	3.009400E-06
J	6.631350E-07
L	0.000000E+00

	S1	S2
SHAPE	CONVEX	CONCAVE
RADIUS	INFINITY	50.00
SURFACE QUALITY	60-40	60-40
CLEAR APERTURE	Ø 3.00	Ø 3.00
BEVEL MAX	PROTECTIVE AS NEEDED	PROTECTIVE AS NEEDED

SPECIFICATIONS SUBJECT TO CHANGE WITHOUT NOTICE DIMENSIONS ARE FOR REFERENCE ONLY

EFL @ 550nm	2.99	 Edmund Optics®	
BFL @ 550nm	0.97		
THIRD ANGLE PROJECTION 	TITLE	3mm DIA. x 2.99mm FL, SMALL DIAMETER PLASTIC ASPHERE	
ALL DIMS IN	mm	DWG NO	15271
			SHEET 1 OF 1