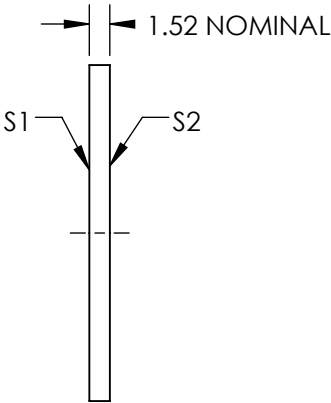
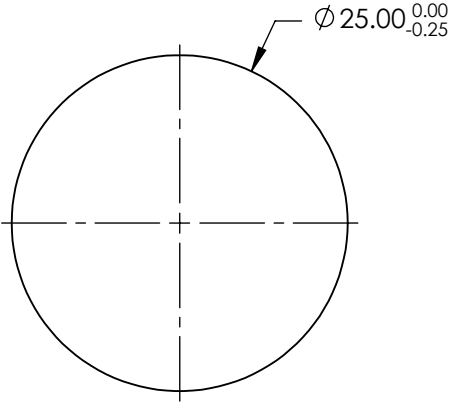
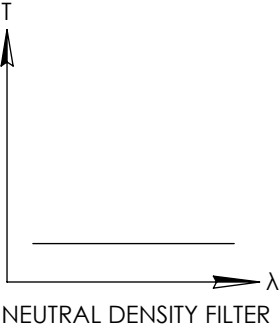


NOTES:

- 1. SUBSTRATE:
SCHOTT NG11
- 2. SURFACE S2 TO BE PARALLEL WITH SURFACE S1 TO WITHIN <30 ARCSEC
- 3. COATING(APPLY ACROSS CLEAR APERTURE)
S1 & S2: R(AVG) ≤1.0% @ 450 - 700nm @ 0°
- 4. OD: 0.2±10% @ 550nm
- 5. POWER, IRREGULARITY, AND SURFACE QUALITY SPECIFICATIONS APPLY ACROSS CLEAR APERTURE
- 6. TRANSMITTED WAVEFRONT DISTORTION P-V @ 632.8: λ/4
- 7. ROHS COMPLIANT

**FOR INFORMATION ONLY:
DO NOT MANUFACTURE
PARTS TO THIS DRAWING**



SPECIFICATIONS SUBJECT TO CHANGE WITHOUT NOTICE
DIMENSIONS ARE FOR REFERENCE ONLY

	S1	S2
SHAPE	PLANO	PLANO
SURFACE QUALITY	80-50	80-50
CLEAR APERTURE	Ø22.50	Ø22.50
BEVEL	PROTECTIVE AS NEEDED	PROTECTIVE AS NEEDED

THIRD ANGLE
PROJECTION

ALL DIMS IN mm

 **Edmund Optics®**

TITLE	0.2 OD, 25mm Dia., Precision Anti-Reflection Coated Absorptive Neutral Density Filters		
DWG NO	16049	SHEET 1 OF 1	