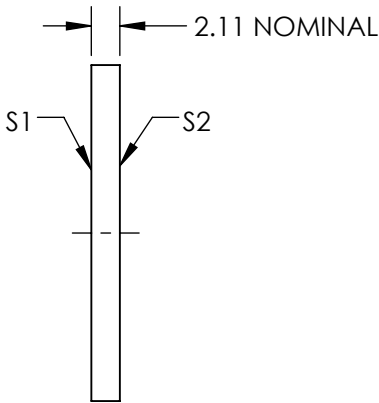
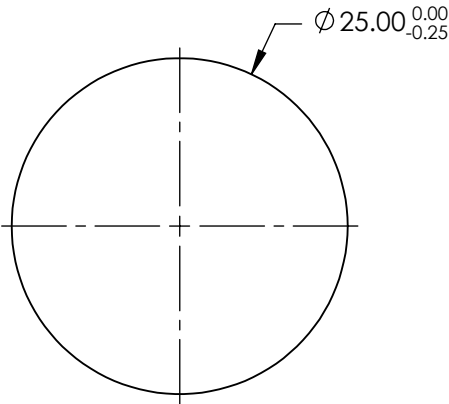
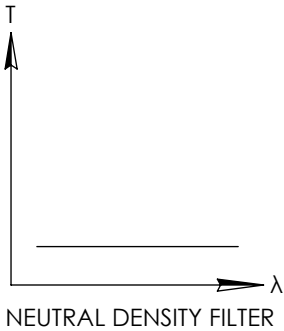


NOTES:


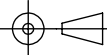
- 1. SUBSTRATE:
SCHOTT NG5
- 2. SURFACE S2 TO BE PARALLEL WITH SURFACE S1 TO WITHIN <30 ARCSEC
- 3. COATING(APPLY ACROSS CLEAR APERTURE)
S1 & S2: R(AVG) $\leq 1.0\%$ @ 450 - 700nm @ 0°
- 4. OD: 0.5 \pm 10% @ 550nm
- 5. POWER, IRREGULARITY, AND SURFACE QUALITY SPECIFICATIONS APPLY ACROSS CLEAR APERTURE
- 6. TRANSMITTED WAVEFRONT DISTORTION P-V @ 632.8: $\lambda/4$
- 7. ROHS COMPLIANT

**FOR INFORMATION ONLY:
DO NOT MANUFACTURE
PARTS TO THIS DRAWING**



SPECIFICATIONS SUBJECT TO CHANGE WITHOUT NOTICE
DIMENSIONS ARE FOR REFERENCE ONLY

	S1	S2
SHAPE	PLANO	PLANO
SURFACE QUALITY	80-50	80-50
CLEAR APERTURE	$\varnothing 22.50$	$\varnothing 22.50$
BEVEL	PROTECTIVE AS NEEDED	PROTECTIVE AS NEEDED

 Edmund Optics®			
THIRD ANGLE PROJECTION 		TITLE	0.5 OD, 25mm Dia., Precision Anti-Reflection Coated Absorptive Neutral Density Filter
ALL DIMS IN	mm	DWG NO	16055
			SHEET 1 OF 1