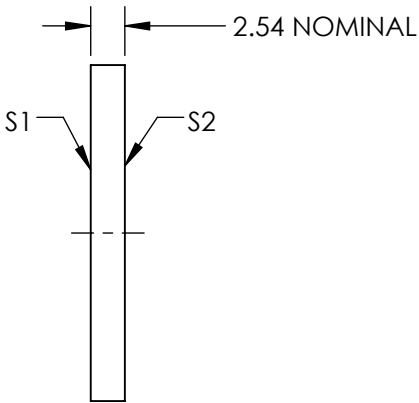
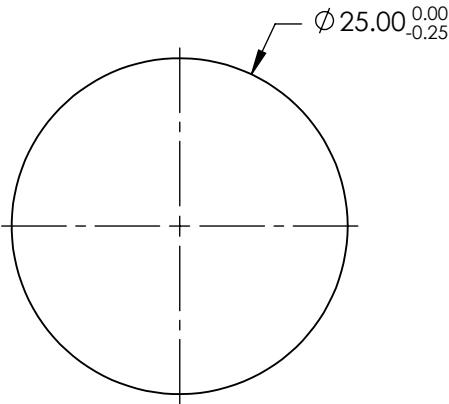
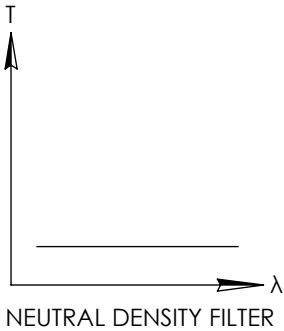


NOTES:


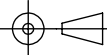
1. SUBSTRATE:
SCHOTT NG5
2. SURFACE S2 TO BE PARALLEL WITH SURFACE S1 TO WITHIN <30 ARCSEC
3. COATING(APPLY ACROSS CLEAR APERTURE)
S1 & S2: R(AVG) $\leq 1.0\%$ @ 450 - 700nm @ 0°
4. OD: $0.6 \pm 10\%$ @ 550nm
5. POWER, IRREGULARITY, AND SURFACE QUALITY SPECIFICATIONS APPLY ACROSS CLEAR APERTURE
6. TRANSMITTED WAVEFRONT DISTORTION P-V @ 632.8: $\lambda/4$
7. ROHS COMPLIANT

**FOR INFORMATION ONLY:
DO NOT MANUFACTURE
PARTS TO THIS DRAWING**



SPECIFICATIONS SUBJECT TO CHANGE WITHOUT NOTICE
DIMENSIONS ARE FOR REFERENCE ONLY

| | S1 | S2 |
|-----------------|----------------------|----------------------|
| SHAPE | PLANO | PLANO |
| SURFACE QUALITY | 80-50 | 80-50 |
| CLEAR APERTURE | Ø22.50 | Ø22.50 |
| BEVEL | PROTECTIVE AS NEEDED | PROTECTIVE AS NEEDED |

| | | | |
|--|----|--------|---|
|  Edmund Optics® | | | |
| THIRD ANGLE PROJECTION  | | TITLE | 0.6 OD, 25mm Dia., Precision Anti-Reflection Coated Absorptive Neutral Density Filter |
| ALL DIMS IN | mm | DWG NO | 16057 |
| | | | SHEET 1 OF 1 |