

NOTES:

- SUBSTRATE:  
LIBA 2000+
- CENTERING TOLERANCE (AT 587.6nm): BEAM DEVIATION (HALF ANGLE): <25 ARCMIN
- COATING (APPLY ACROSS COATING APERTURE)  
S1: R(AVG) ≤ 0.5% FROM 600-1050nm @ 0° AOI  
S2: R(AVG) ≤ 0.5% FROM 600-1050nm @ 0° AOI

4. EDGE: AS MOLDED

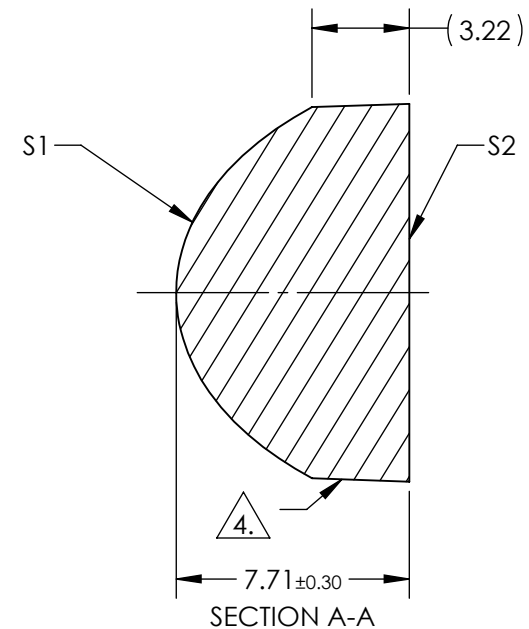
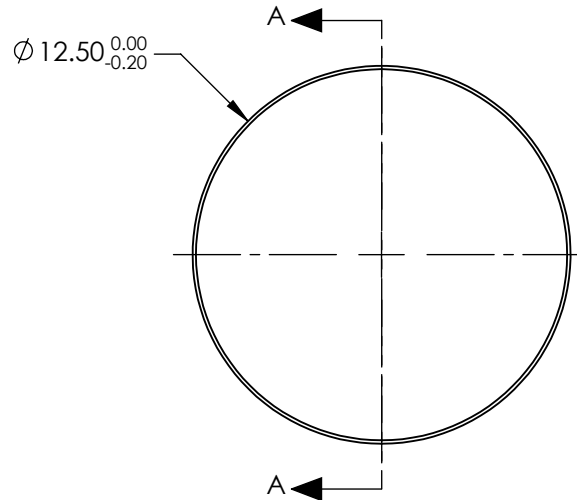
5. ASPHERIC SURFACE DESCRIBED BY THE FOLLOWING EQUATION AND COEFFICIENTS SHOWN IN TABLE BELOW

$$Z(Y) = \frac{\left(\frac{1}{\text{RADIUS}}\right) * Y^2}{1 + \sqrt{1 - (1+k) * \left(\frac{1}{\text{RADIUS}}\right)^2 * Y^2}} + D * Y^2 + E * Y^4 + F * Y^6 + G * Y^8 + H * Y^{10} + J * Y^{12} + L * Y^{14} + M * Y^{16}$$



6. RoHS: COMPLIANT

COEFFICIENT TABLE 5.

	S1
Semi-diameter	6.25
Coefficient	
(1/RADIUS)	1.917913E-01
k	-7.380216E-01
D	0.000000E+00
E	2.109812E-04
F	1.679803E-06
G	4.255379E-08
H	0.000000E+00
J	0.000000E+00
L	0.000000E+00
M	0.000000E+00



SPECIFICATIONS SUBJECT TO CHANGE WITHOUT NOTICE  
DIMENSIONS ARE FOR REFERENCE ONLY

	S1	S2	EFL: 10.00		 Edmund Optics®		
SHAPE	CONVEX	PLANO	BFL: 4.93				
RADIUS	4.170	∞			TITLE	LENS CONDENSER 12.5mm X 10mm NIR I TS	
SURFACE QUALITY	As Molded	As Molded			DWG NO	15729	
CLEAR APERTURE	Ø11.28	Ø11.28	ALL DIMS IN	mm			
BEVEL	PROTECTIVE AS NEEDED	PROTECTIVE AS NEEDED					

**FOR INFORMATION ONLY:  
DO NOT MANUFACTURE  
PARTS TO THIS DRAWING**