

NOTES:

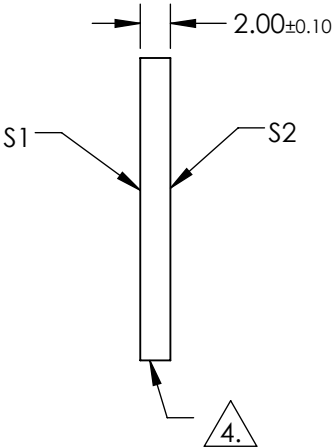
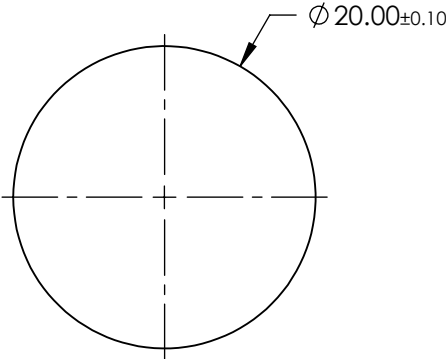
- 1. SUBSTRATE:
SAPPHIRE (AL2O3)
- 2. SURFACE S2 TO BE PARALLEL WITH SURFACE S1 TO WITHIN ≤ 3.5 ARCMIN
- 3. COATING (APPLY ACROSS CLEAR APERTURE)

S1 & S2: R(AVG) $<1.5\%$ @ 2000-5000nm
R(ABS) $<3.0\%$ @ 2000-5000nm
R(AVG) $<1.75\%$ @ 2000-4000nm

4. FINE GRIND SURFACE

- 5. ROHS COMPLIANT

FOR INFORMATION ONLY:
DO NOT MANUFACTURE
PARTS TO THIS DRAWING



	S1	S2
SHAPE	PLANO	PLANO
CLEAR APERTURE	Ø18.00	Ø18.00
SURFACE FLATNESS	2λ	2λ
SURFACE ROUGHNESS	0.1 MICRONS PER INCH	0.1 MICRONS PER INCH
SURFACE QUALITY	80-50	80-50
BIREFRINGENCE (n _o -n _e)	0.008	0.008
BEVEL	PROTECTIVE AS NEEDED	PROTECTIVE AS NEEDED

SPECIFICATIONS SUBJECT TO CHANGE WITHOUT NOTICE
DIMENSIONS ARE FOR REFERENCE ONLY

Edmund Optics®

THIRD ANGLE PROJECTION	TITLE	20mm DIAMETER, BBAR (2000-5000nm) AR COATED SAPPHIRE WINDOW
ALL DIMS IN	DWG NO	16007
mm		SHEET 1 OF 1