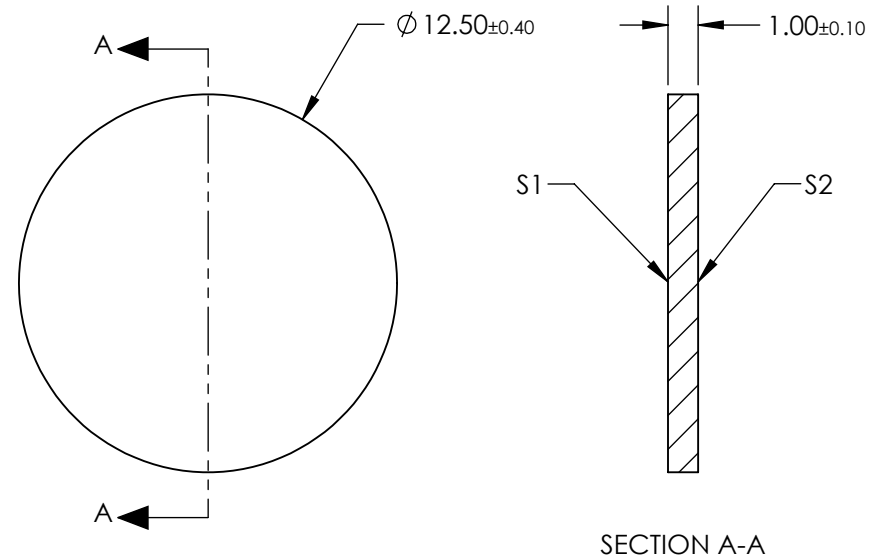


NOTES:


1. SUBSTRATE:  
FUSED SILICA
2. COATING (APPLY ACROSS COATING APERTURE):  
S1 & S2: NONE
3. EXTINCTION RATIO:  
4:1 @ 240nm  
15:1 @ 254nm  
20:1 @ 260nm  
90:1 @ 300nm  
200:1 @ 340nm  
1600:1 @ 400nm
4. TRANSMISSION (%):  
40% @ 240nm  
65% @ 254nm  
67% @ 260nm  
75% @ 300nm  
80% @ 340nm  
82% @ 400nm
5. OPERATING TEMPERATURE: +150°C (MAX.)
6. THERMAL EXPANSION:  $5.5 \times 10^{-7}/^{\circ}\text{C}$
7. ALIGNMENT TOLERANCE:  $\pm 1.0^{\circ}$
8. CONSTRUCTION: WIRE GRID
9. WHEN THE REFERENCE MARK IS ORIENTED TO THE 3 OR 9 O'CLOCK POSITION, THE TRANSMISSION AXIS RUNS LEFT TO RIGHT.
10. RoHS: COMPLIANT



**FOR INFORMATION ONLY:  
DO NOT MANUFACTURE  
PARTS TO THIS DRAWING**

SPECIFICATIONS SUBJECT TO CHANGE WITHOUT NOTICE  
DIMENSIONS ARE FOR REFERENCE ONLY

**Edmund Optics®**

	S1	S2	<div>THIRD ANGLE PROJECTION</div> 		12.5mm Dia., UV Wire Grid Linear Polarizer		
SHAPE	PLANO	PLANO					
SURFACE QUALITY	60-40	60-40	ALL DIMS IN	mm	DWG NO	17153	SHEET 1 OF 1
CLEAR APERTURE	Ø 10.00	Ø 10.00					