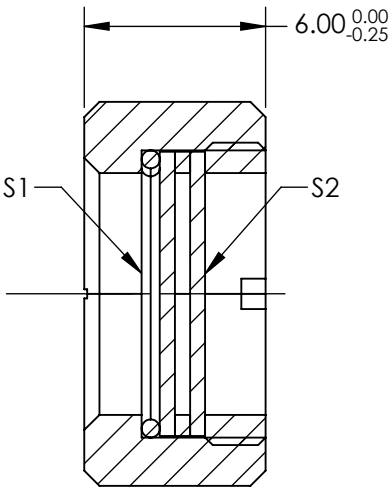
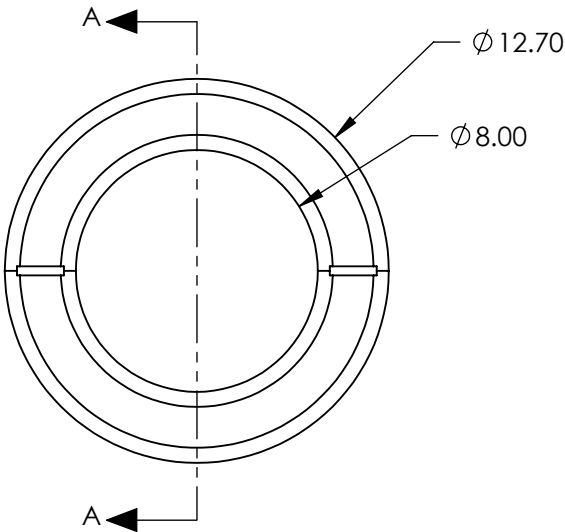
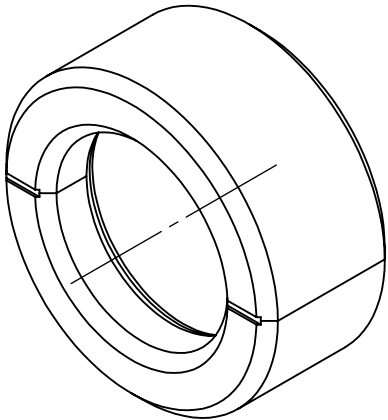


NOTES:

- 1. SUBSTRATE:
CRYSTAL QUARTZ
- 2. COATING (APPLY ACROSS CLEAR APERTURE)

S1 & S2: R(abs) <0.2% @ 343nm
DAMAGE THRESHOLD: >10 J/cm² @10ns @1064 nm
- 3. SURFACE S1 TO BE PARALLEL TO SURFACE S2 TO WITHIN <3 ARCSEC
- 4. RETARDANCE: $\lambda/2 \pm \lambda/300$ @ 20° C
- 5. TRANSMITTED WAVEFRONT: < $\lambda/10$ @ 632.8 nm
- 6. ROHS COMPLIANT

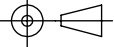


SECTION A-A

**FOR INFORMATION ONLY:
DO NOT MANUFACTURE
PARTS TO THIS DRAWING**

SPECIFICATIONS SUBJECT TO CHANGE WITHOUT NOTICE
DIMENSIONS ARE FOR REFERENCE ONLY

Edmund Optics®

	S1	S2	THIRD ANGLE PROJECTION 		TITLE	12.7mm Dia. 343nm $\lambda/2$ Quartz Waveplate Zero Order	
CLEAR APERTURE	$\varnothing 8.0$	$\varnothing 8.0$	ALL DIMS IN	mm	DWG NO	16883	SHEET 1 OF 1
SURFACE QUALITY	10-5	10-5					