

NOTES:

1. SUBSTRATE:
FUSED SILICA
2. COATING (APPLY ACROSS CLEAR APERTURE)

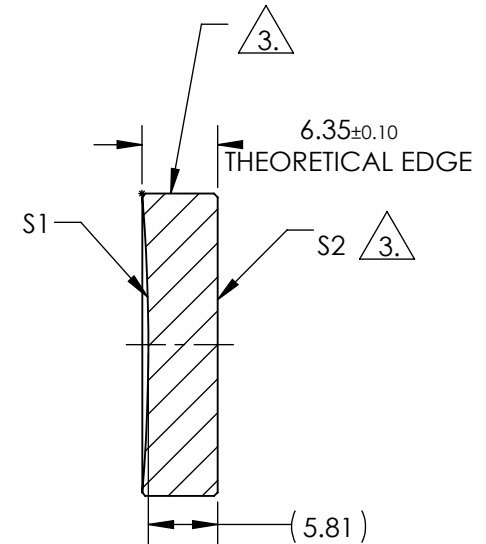
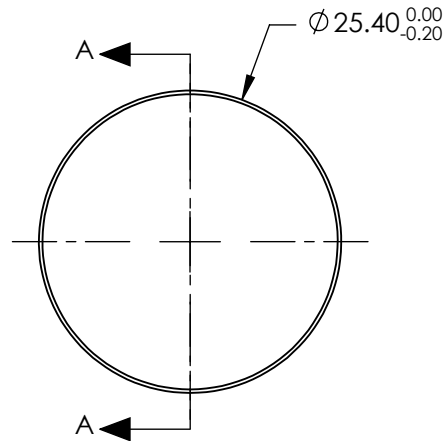
S1: Ultrafast-Enhanced Silver
R(AVG) >99% @ 850-1150nm @ 0° AOI
Rs >99% @ 800-1150nm @ 45° AOI
Rp >98.5% @ 850-1100nm @ 45° AOI
GDD:0 ±30 fs² @ 800 - 1150 nm

S2: NONE

△ 3. FINE GRIND SURFACE

4. EFL (EFFECTIVE FOCAL LENGTH): 75mm

5. Damage Threshold, Pulsed:
0.4 J/cm² @ 1030nm, 200fs, 1 pulse (typical)
0.18 J/cm² @ 1030nm, 200fs, 100Hz, 1000 pulses (typical)



SECTION A-A

**FOR INFORMATION ONLY:
DO NOT MANUFACTURE
PARTS TO THIS DRAWING**

SPECIFICATIONS SUBJECT TO CHANGE WITHOUT NOTICE
DIMENSIONS ARE FOR REFERENCE ONLY

	S1	S2
SHAPE	CONCAVE	PLANO
RADIUS	150.00	INFINITY
SURFACE QUALITY	20-10	N/A
CLEAR APERTURE	22.86mm	N/A
IRREGULARITY AT 632.8nm	λ/10	N/A
BEVEL	PROTECTIVE AS NEEDED	PROTECTIVE AS NEEDED



ALL DIMS IN

mm

EO® **Edmund Optics**®

800-1150nm, 25.4mm Dia. x 75mm EFL,
Ultrafast-Enhanced Silver Concave Mirror

TITLE	DWG NO	17269	SHEET 1 OF 1
-------	--------	-------	-----------------