

NOTES:

- SUBSTRATE MATERIAL:  
FUSED SILICA
- SURFACE S2 TO BE PARALLEL TO SURFACE S1 <3 ARCMIN

3. COATING (APPLY ACROSS COATING APERTURE)

S1: DIELECTRIC

Rs>99.9% @500-540nm;  
Rp>99.8% @507-527nm;  
Rs>99.9% @1000-1070nm,  
Rp>99.9% @1005-1070nm

S2: STRESS-COMPENSATING

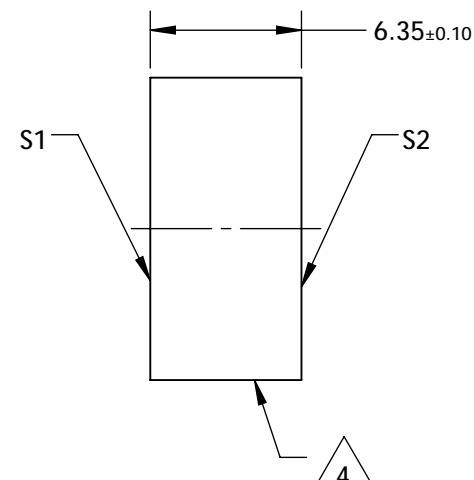
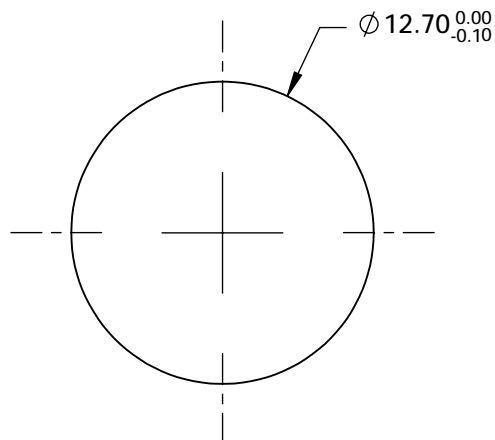
GROUP DELAY DISPERSION:

<35fs<sup>2</sup> @ 500 - 540nm (s-pol)  
<50fs<sup>2</sup> @ 510 - 525nm (p-pol)  
<20fs<sup>2</sup> @ 1000 - 1070nm (s-pol)  
<40fs<sup>2</sup> @ 1010 - 1055nm (p-pol)

4. FINE GROUND SURFACE

- RoHS: COMPLIANT

**FOR INFORMATION ONLY:  
DO NOT MANUFACTURE  
PARTS TO THIS DRAWING**



SPECIFICATIONS SUBJECT TO CHANGE WITHOUT NOTICE  
DIMENSIONS ARE FOR REFERENCE ONLY

	S1	S2
SHAPE	PLANO	PLANO
SURFACE FLATNESS	λ/8 @ 633nm over dia. 9mm aperture	N/A
SURFACE QUALITY	10-5	COMMERCIAL POLISH
CLEAR APERTURE (mm)	11.00	N/A
BEVEL	PROTECTIVE AS NEEDED	PROTECTIVE AS NEEDED



ALL DIMS IN mm

**EO**® Edmund Optics®

TITLE 515, 1030nm, 12.7mm Dia., Dual Band Low GDD Mirror

DWG NO 17286

SHEET  
1 OF 1