

NOTES:

1. SUBSTRATE MATERIAL:  
FUSED SILICA
2. SURFACE S2 TO BE PARALLEL TO SURFACE S1 <3 ARCMIN
3. COATING (APPLY ACROSS COATING APERTURE)  
S1: DIELECTRIC  
Rs>99.9% @500-540nm;  
Rp>99.8% @507-527nm;  
Rs>99.9% @1000-1070nm,  
Rp>99.9% @1005-1070nm

S2: STRESS-COMPENSATING

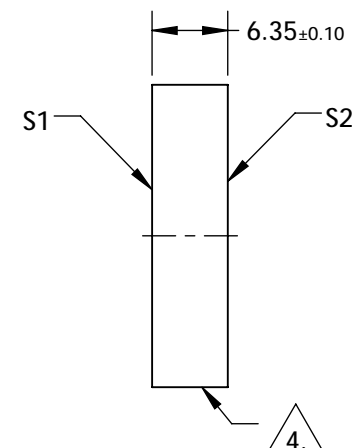
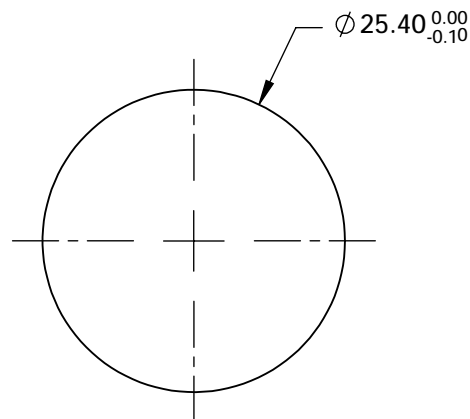
GROUP DELAY DISPERSION:

- <35fs² @ 500 - 540nm (s-pol)
- <50fs² @ 510 - 525nm (p-pol)
- <20fs² @ 1000 - 1070nm (s-pol)
- <40fs² @ 1010 - 1055nm (p-pol)

4. FINE GROUND SURFACE

5. RoHS: COMPLIANT

**FOR INFORMATION ONLY:  
DO NOT MANUFACTURE  
PARTS TO THIS DRAWING**



SPECIFICATIONS SUBJECT TO CHANGE WITHOUT NOTICE  
DIMENSIONS ARE FOR REFERENCE ONLY

	S1	S2
SHAPE	PLANO	PLANO
SURFACE FLATNESS	$\lambda/6$ @ 633nm over dia. 20mm aperture	N/A
SURFACE QUALITY	10-5	COMMERCIAL POLISH
CLEAR APERTURE (mm)	22.00	N/A
BEVEL	PROTECTIVE AS NEEDED	PROTECTIVE AS NEEDED



ALL DIMS IN mm

**EO**® Edmund Optics®

TITLE 515, 1030nm, 25.4mm Dia., Dual Band Low GDD Mirror

DWG NO 17287

SHEET  
1 OF 1