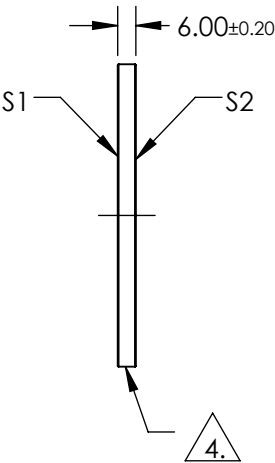
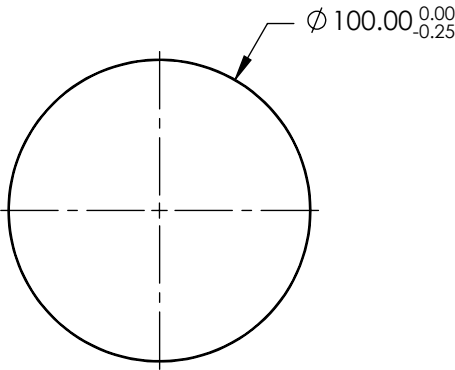
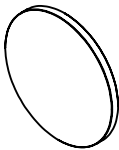


NOTES:

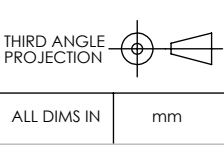
- 1. SUBSTRATE:
N-BK7
- 2. S2 TO BE PARALLEL TO S1 TO WITHIN <1 ARCMIN
- 3. COATING (APPLY ACROSS COATING APERTURE)
S1 & S2: NIR I (600-1050nm)
R(AVG) ≤0.5% @ 600 - 1050nm
- 4. FINE GRIND SURFACE
- 5. ROHS COMPLIANT
- 6. SURFACE FLATNESS (P-V): λ/4 (per inch over clear aperture)



**FOR INFORMATION ONLY:
DO NOT MANUFACTURE
PARTS TO THIS DRAWING**

SPECIFICATIONS SUBJECT TO CHANGE WITHOUT NOTICE
DIMENSIONS ARE FOR REFERENCE ONLY

	S1	S2
SHAPE	PLANO	PLANO
SURFACE QUALITY	60-40	60-40
WAVELENGTH RANGE	600 - 1050 nm	600 - 1050 nm
BEVEL	PROTECTIVE AS NEEDED	PROTECTIVE AS NEEDED



Edmund Optics®

TITLE	100mm DIA., 6mm THICK, NIR I COATED λ/4 N-BK7 WINDOW		
DWG NO	17295	SHEET 1 OF 1	