

NOTES:

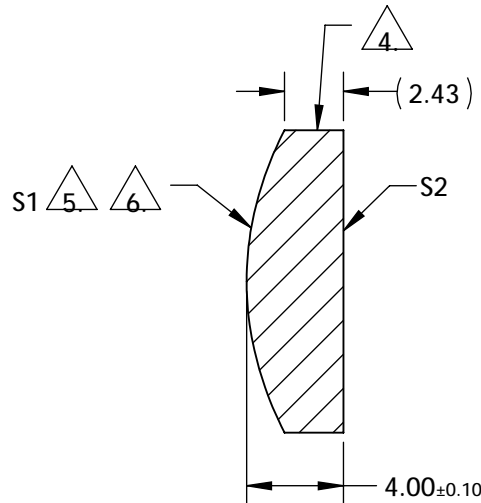
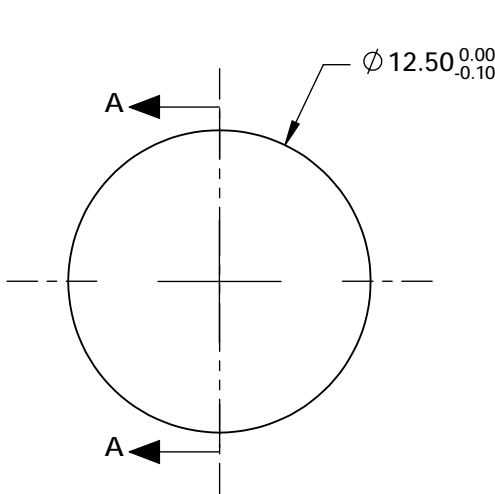
1. SUBSTRATE:  
N-BK7
2. CENTERING TOLERANCE (AT 587.6nm):  
BEAM DEVIATION (HALF ANGLE): <3 arcmin
3. COATING (APPLY ACROSS COATING APERTURE)  
S1: VIS (350-700nm)  
Ravg < 0.5% @ 350 - 700nm @ ±30° AOI  
Rabs < 1.5% @ 350 - 700nm @ ±30° AOI  
S2: VIS (350-700nm)  
Ravg < 0.5% @ 350 - 700nm @ ±30° AOI  
Rabs < 1.5% @ 350 - 700nm @ ±30° AOI

4. EDGES: FINE GROUND

5. ASPHERIC FIGURE ERROR: 0.75 µm RMS

6. ASPHERIC SURFACE DESCRIBED BY (REF. COEFFICIENT TABLE):


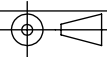
$$Z_{ASPH}(Y) = \frac{(\frac{1}{RADIUS})^2 Y^2}{1 + \sqrt{1 - (1+k)(\frac{1}{RADIUS})^2 Y^2}} + D * Y^2 + E * Y^4 + F * Y^6 + G * Y^8 + H * Y^{10} + J * Y^{12} + L * Y^{14}$$



SECTION A-A

COEFFICIENT TABLE 6.

COEFFICIENT	S1
SEMI-DIAMETER	6.250000E+00
(1/RADIUS)	7.82472613E-02
k	-6.920000E-01
D	0.000000E+00
E	7.352300E-06
F	8.146400E-09
G	0.000000E+00
H	0.000000E+00
J	0.000000E+00
L	0.000000E+00

	S1	S2	 Edmund Optics®			
SHAPE	CONVEX	PLANO	BFL @ 780nm: 22.35			
RADIUS	12.780	INFINITY				
SURFACE QUALITY	40-20	40-20				
CLEAR APERTURE	11.25mm	11.25mm	TITLE			
BEVEL	PROTECTIVE AS NEEDED	PROTECTIVE AS NEEDED	12.5mm Dia., 0.25 NA, 350-700nm Coated, NIR Aspheric Lens			
ALL DIMS IN			mm	DWG NO	16268	SHEET 1 OF 1