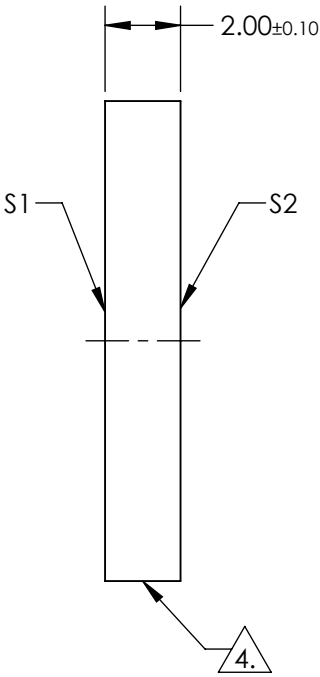
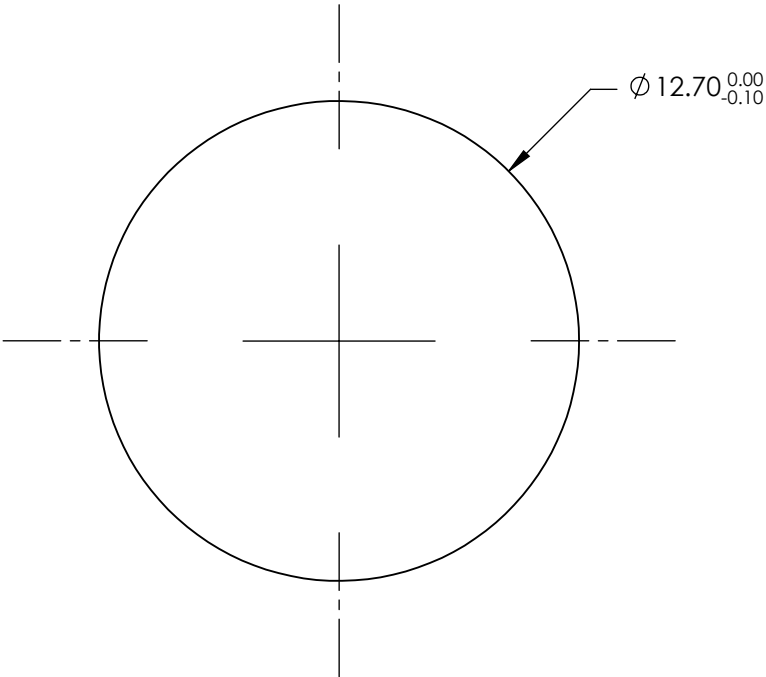


- NOTES:
- 1. SUBSTRATE: CALCIUM FLUORIDE (CAF2) VACUUM UV GRADE
  - 2. SURFACE S1 TO BE PARALLEL WITH SURFACE S2 TO <1 ARCMIN
  - 3. COATING (APPLY ACROSS CLEAR APERTURE)

S1 & S2: R(ABS) ≤1.0% @ 350 - 450nm  
R(AVG) ≤1.5% @ 250 - 700nm

4. FINE GRIND SURFACE



**FOR INFORMATION ONLY:**  
**DO NOT MANUFACTURE**  
**PARTS TO THIS DRAWING**

SPECIFICATIONS SUBJECT TO CHANGE WITHOUT NOTICE  
DIMENSIONS ARE FOR REFERENCE ONLY

	S1	S2
SHAPE	PLANO	PLANO
SURFACE FLATNES	$\lambda/2$	$\lambda/2$
SURFACE QUALITY	40-20	40-20
CLEAR APERTURE	$\varnothing 11.43$	$\varnothing 11.43$
BEVEL	PROTECTED AS NEEDED	PROTECTED AS NEEDED



ALL DIMS IN mm

**Edmund Optics®**

TITLE

12.7mm Diameter, UV-VIS Coated, Calcium  
Fluoride Window

DWG NO

17601

SHEET  
1 OF 1