

NOTES:

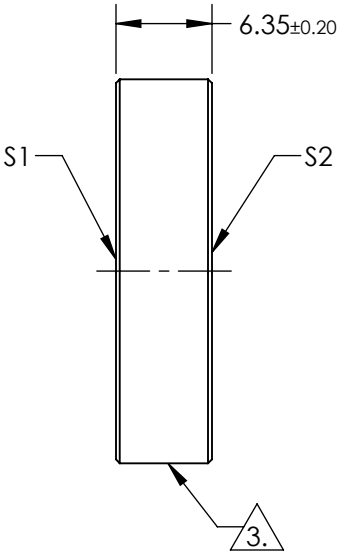
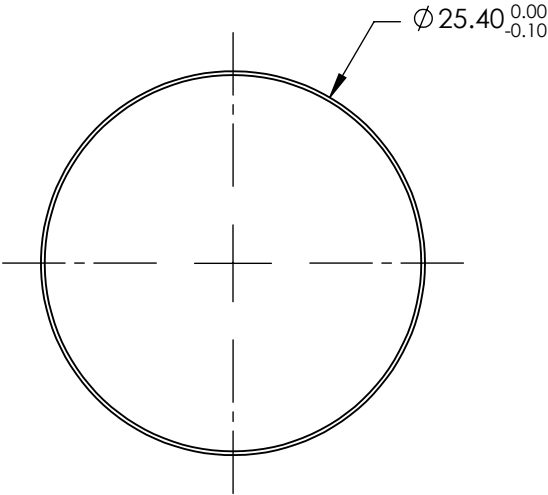
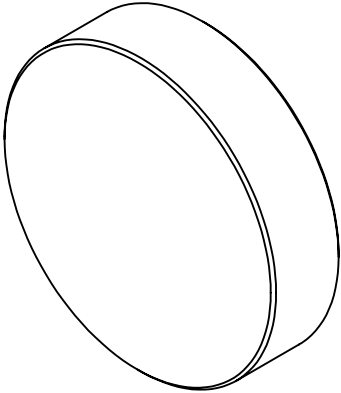
1. SUBSTRATE: Fused Silica (Corning 7980)
2. COATING (APPLY ACROSS CLEAR APERTURE)

S1 & S2: R(ABS) <0.25% @ 532nm
R(ABS) <0.10% 1064nm

DAMAGE threshold, pulsed:
5 J/cm² @ 532nm, 20ns, 20Hz
15 J/cm² @ 1064nm, 20ns, 20Hz

3. FINE GRIND SURFACE

4. ROHS COMPLIANT

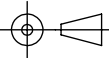


FOR INFORMATION ONLY:
DO NOT MANUFACTURE
PARTS TO THIS DRAWING

SPECIFICATIONS SUBJECT TO CHANGE WITHOUT NOTICE
DIMENSIONS ARE FOR REFERENCE ONLY

	S1	S2
SHAPE	PLANO	PLANO
SURFACE FLATNESS	$\lambda/10$	$\lambda/10$
SURFACE QUALITY	10-5	10-5
CLEAR APERTURE	$\varnothing 22.86$	$\varnothing 22.86$
BEVEL	PROTECTED AS NEEDED	PROTECTED AS NEEDED

THIRD ANGLE
PROJECTION



ALL DIMS IN

mm



Edmund Optics®

TITLE

532, 1064nm, 25.4mm, DUAL-BAND AR FUSED
SILICA WINDOW

DWG NO

17588

SHEET
1 OF 1