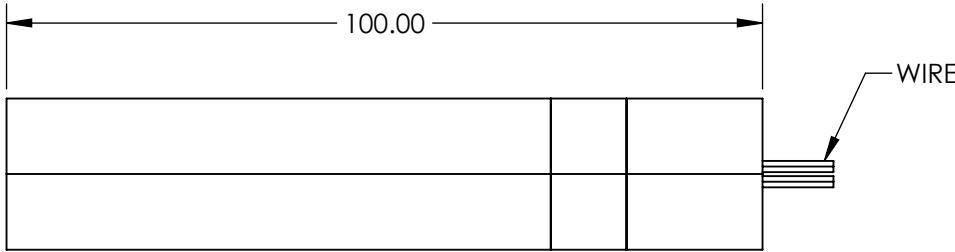
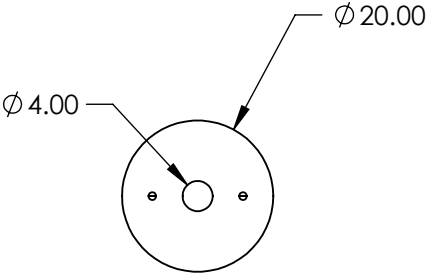
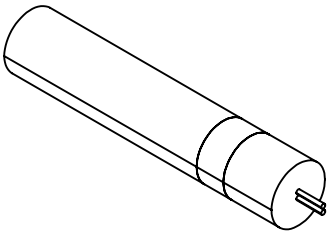


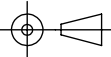
- NOTES:
1. LASER CLASS: IIIb
 2. BEAM DIAMETER (mm): 1.5 typical
BEAM DIVERGENCE (mrad): <1.5 Typical
 3. OPERATING TEMPERATURE: 15 to 35 °C
OPERATING VOLTAGE: 3.00 V
 4. OUTPUT POWER: 10 mW
 5. WAVELENGTH RANGE: 589.00 ±2 nm



SPECIFICATIONS SUBJECT TO CHANGE WITHOUT NOTICE
DIMENSIONS ARE FOR REFERENCE ONLY

**FOR INFORMATION ONLY:
DO NOT MANUFACTURE
PARTS TO THIS DRAWING**

EO[®] Edmund Optics[®]

THIRD ANGLE PROJECTION 		TITLE	10mW, 589nm DPSS Pointing Laser	
ALL DIMS IN	mm	DWG NO	19472	SHEET 1 OF 1