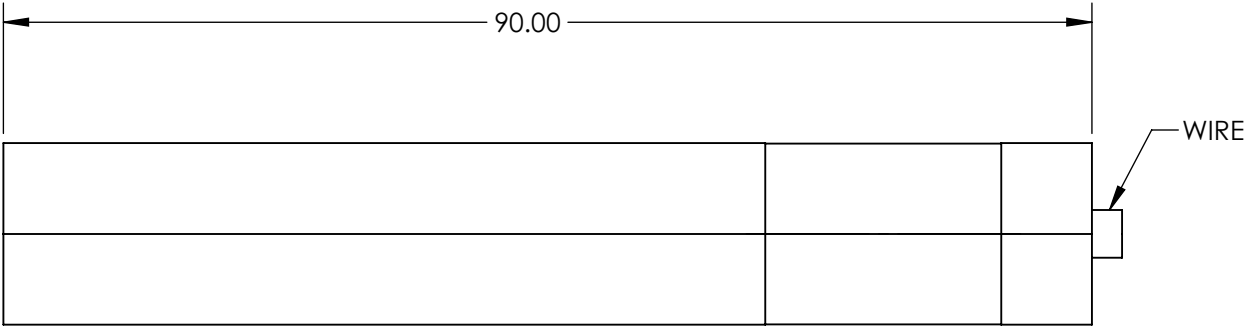
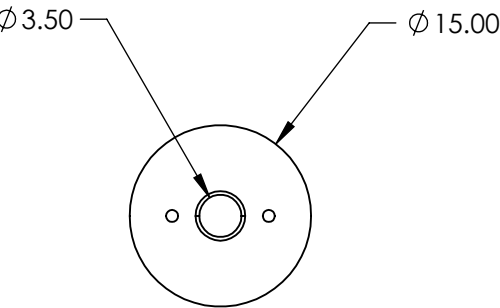
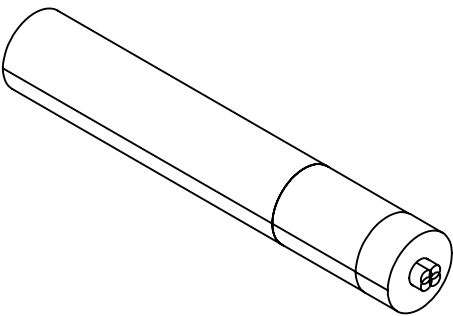


NOTES:

- 1. LASER CLASS: IIIb
- 2. OPERATING TEMPERATURE: 15 to 35°C
OPERATING VOLTAGE: 3 V
- 3. OUTPUT POWER: 100 mW
- 4. WAVELENGTH RANGE: 1064 ±2nm



SPECIFICATIONS SUBJECT TO CHANGE WITHOUT NOTICE
DIMENSIONS ARE FOR REFERENCE ONLY

**FOR INFORMATION ONLY:
DO NOT MANUFACTURE
PARTS TO THIS DRAWING**

EO[®] Edmund Optics[®]

THIRD ANGLE PROJECTION		TITLE	100mW, 1064nm DPSS Pointing Laser	
ALL DIMS IN	mm	DWG NO	19474	SHEET 1 OF 1