

NOTES:

1. SUBSTRATE:
ZERODUR®

2. S2 TO BE PARALLEL TO S1 TO WITHIN 30 ARCSEC

3. COATING (APPLY ACROSS CLEAR APERTURE)

S1: Protected Silver (450-10000nm)
R(AVG) >98% @ 450 - 2000nm
R(AVG) >98% @ 2000 - 10,000nm
S2: NONE

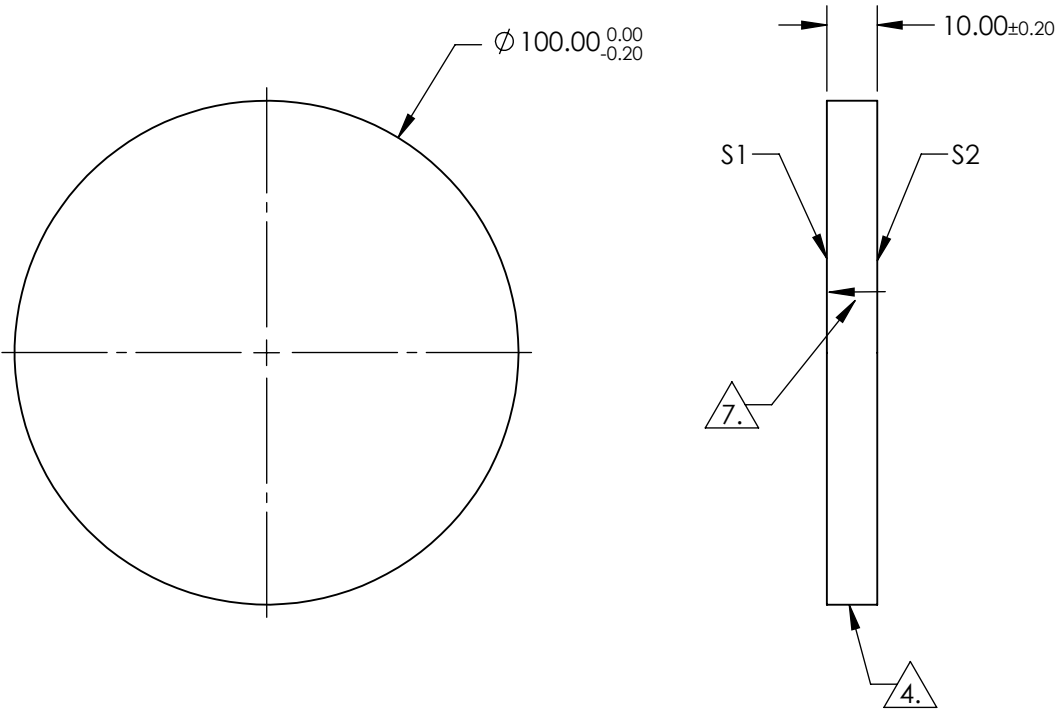
4. FINE GRIND SURFACE (ADD INK NOTE AS NEEDED)

5. CLEAR APERTURE AND COATING APERTURE ARE CENTERED ON SURFACE

6. SURFACE QUALITY SPECIFICATIONS APPLY ACROSS CLEAR APERTURE


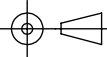
7. ARROW ON EDGE POINTS TOWARDS 1/10TH WAVE SURFACE S1

8. ROHS COMPLIANT



**FOR INFORMATION ONLY:
DO NOT MANUFACTURE
PARTS TO THIS DRAWING**

SPECIFICATIONS SUBJECT TO CHANGE WITHOUT NOTICE
DIMENSIONS ARE FOR REFERENCE ONLY

	S1	S2	 Edmund Optics®			
SHAPE	PLANO	PLANO		TITLE	100mm Dia. Protected Silver Coated, λ/10 ZERODUR® Mirror	
SURFACE QUALITY	20-10	COMMERCIAL POLISH		DWG NO	17804	SHEET 1 OF 1
SURFACE FLATNESS	λ/10	N/A				
CLEAR APERTURE	Ø 90.00	N/A				
BEVEL	PROTECTED AS NEEDED	PROTECTED AS NEEDED	ALL DIMS IN	mm		