

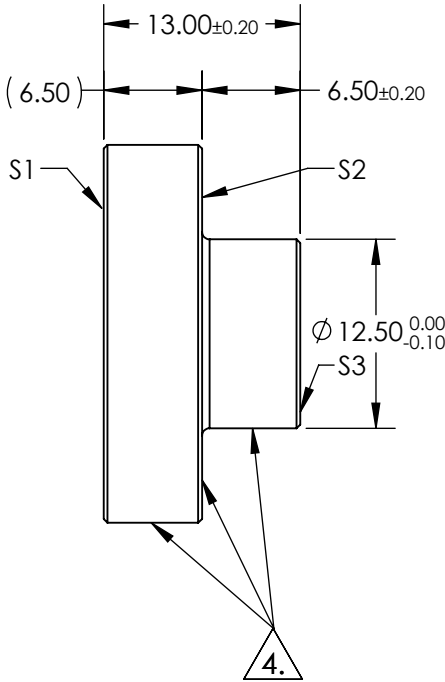
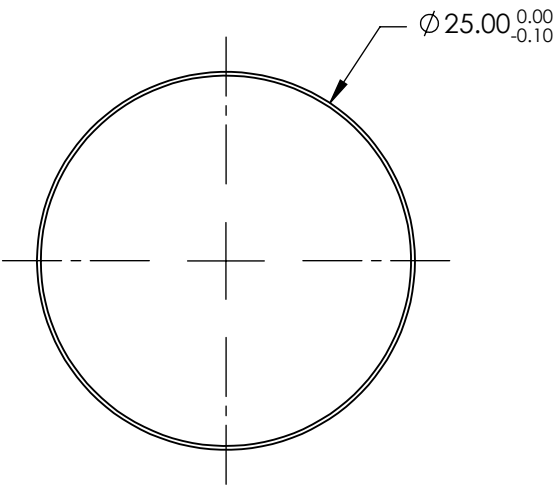
NOTES:

1. SUBSTRATE: Fused Silica
2. RoHS: COMPLIANT
3. COATING (APPLY ACROSS COATING APERTURE)
S1: R > 99% @ 600-1000nm @ 0° AOI
Rs > 99% @ 540-1000nm @ 45° AOI
Rp > 98.5% @ 730-870nm @ 45° AOI

S2 & S3: NONE

4. FINE GRIND SURFACE

5. GDD: $0 \pm 20\text{fs}^2$ @ 600 - 1050nm



**FOR INFORMATION ONLY:
DO NOT MANUFACTURE
PARTS TO THIS DRAWING**

SPECIFICATIONS SUBJECT TO CHANGE WITHOUT NOTICE
DIMENSIONS ARE FOR REFERENCE ONLY

	S1	S2	S3
SHAPE	PLANO	PLANO	PLANO
SURFACE QUALITY	10-5	FINE GRIND SURFACE	COMMERCIAL POLISH
CLEAR APERTURE	Ø 22.5	N/A	N/A
BEVEL	PROTECTIVE AS NEEDED	PROTECTIVE AS NEEDED	PROTECTIVE AS NEEDED



ALL DIMS IN mm

Edmund Optics®

TITLE
STEMMED LASER MIRROR, Ø25mm,
ULTRAFAST-ENHANCED SILVER

DWG NO
17553

SHEET
1 OF 1