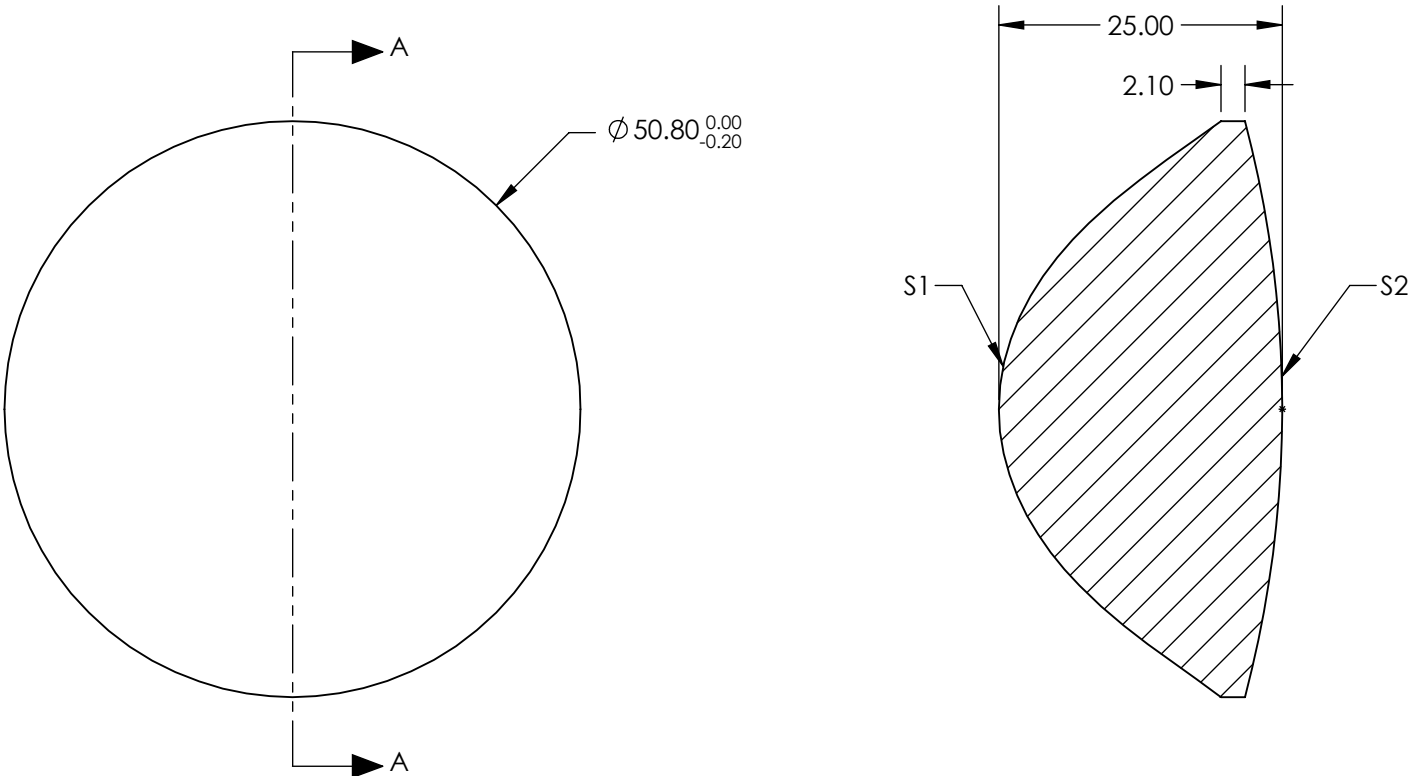


- NOTES:
- 1. SUBSTRATE:  
H-K51
  - 2. COATING (APPLY ACROSS CLEAR APERTURE)  
  
S1: NONE  
S2: NONE
  - 3. CENTERING: ≤30 ARCMIN



SECTION A-A

**FOR INFORMATION ONLY:  
DO NOT MANUFACTURE  
PARTS TO THIS DRAWING**

SPECIFICATIONS SUBJECT TO CHANGE WITHOUT NOTICE  
DIMENSIONS ARE FOR REFERENCE ONLY

PARTS TO THIS DRAWING			EFL @ 587.6nm	32	 Edmund Optics®		
	S1	S2	BFL @ 587.6nm	17			
SHAPE	CONVEX	CONVEX			TITLE	50.8mm Dia. x 32mm FL, Aspheric Condenser Lens	
SURFACE QUALITY	80-50 (typical)	80-50 (typical)					
CLEAR APERTURE	Ø 45.70	Ø 45.70			DWG NO	19523	
BEVEL	PROTECTED AS NEEDED	PROTECTED AS NEEDED					
			ALL DIMS IN	mm			
						SHEET 1 OF 1	