

NOTES:

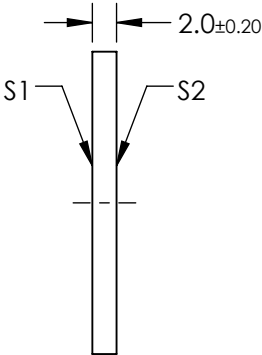
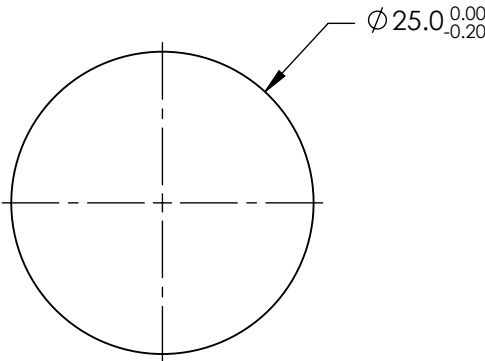
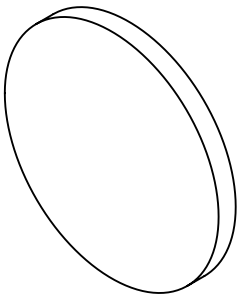
- 1. SUBSTRATE: SODA LIME FLOAT GLASS
- 2. COATING (APPLY ACROSS COATING APERTURE)

S1 & S2:
EXTINCTION RATIO: $T_p/T_s > 100000:1$ FROM 900 - 1200nm
TRANSMISSION: $T_p > 85\%$ FROM 900 - 1200nm

EXTINCTION RATIO: $T_p/T_s > 10000:1$ FROM 750 - 1400nm
TRANSMISSION: $T_p > 83\%$ FROM 750 - 1400nm

EXTINCTION RATIO: $T_p/T_s > 1000:1$ FROM 650 - 1700nm
TRANSMISSION: $T_p > 80\%$ FROM 650 - 1700nm

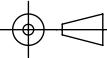
- 3. BEAM DEVIATION: < 1 arcmin
- 4. WAVEFRONT DISTORTION: $< \frac{1}{4}$ WAVE @ 633nm
- 5. RoHS COMPLIANT



**FOR INFORMATION ONLY:
DO NOT MANUFACTURE
PARTS TO THIS DRAWING**

SPECIFICATIONS SUBJECT TO CHANGE WITHOUT NOTICE
DIMENSIONS ARE FOR REFERENCE ONLY

EO[®] Edmund Optics[®]

THIRD ANGLE PROJECTION 		TITLE	Ø25mm, HIGH CONTRAST IR POLARIZER	
ALL DIMS IN	mm	DWG NO	36655	SHEET 1 OF 1