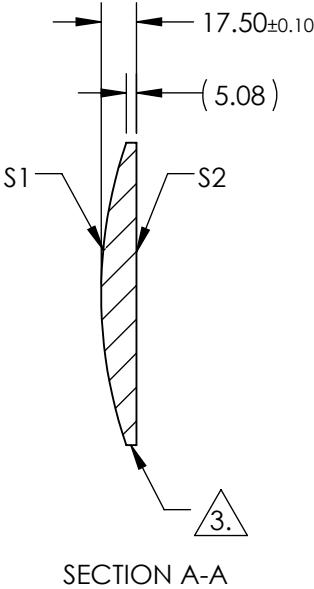
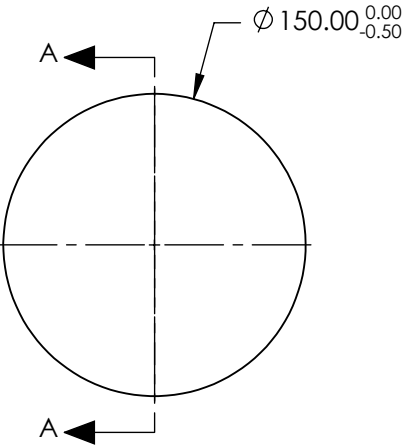
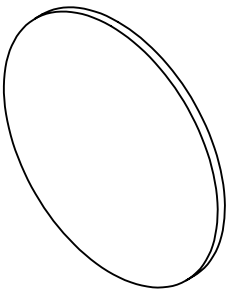


NOTES:


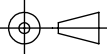
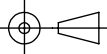
1. SUBSTRATE MATERIAL:
N-BK7
2. COATING (APPLY ACROSS CLEAR APERTURE)

S1 & S2: MgF2 (400-700nm)
Ravg ≤1.75% @ 400 - 700nm
3. FINE GROUND EDGES
4. RoHS COMPLIANT



**FOR INFORMATION ONLY:
DO NOT MANUFACTURE
PARTS TO THIS DRAWING**

SPECIFICATIONS SUBJECT TO CHANGE WITHOUT NOTICE
DIMENSIONS ARE FOR REFERENCE ONLY

| | | | | | | |
|-----------------|----------------------|----------------------|---|-----|---|--|
| | S1 | S2 | EFL | 450 |  Edmund Optics® | |
| SHAPE | CONVEX | PLANO | BFL | 439 | | |
| SURFACE QUALITY | 120-80 | 120-80 |  | | TITLE | 150mm Dia x 450mm Focal Length, MgF2 Coated, PCX Condenser Lens |
| RADIUS | 233 | ∞ | | | | |
| CLEAR APERTURE | Ø146.00 | Ø146.00 |  | | DWG NO | 19913 |
| BEVEL | PROTECTIVE AS NEEDED | PROTECTIVE AS NEEDED | | | | |
| | | | ALL DIMS IN | mm | | SHEET 1 OF 1 |