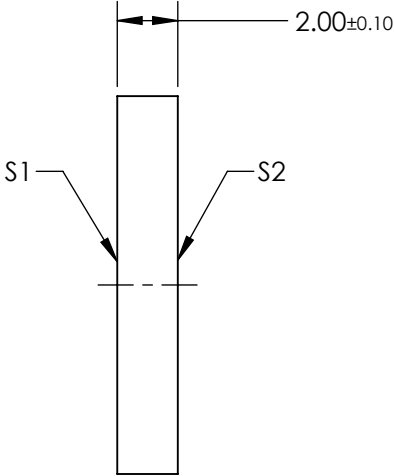
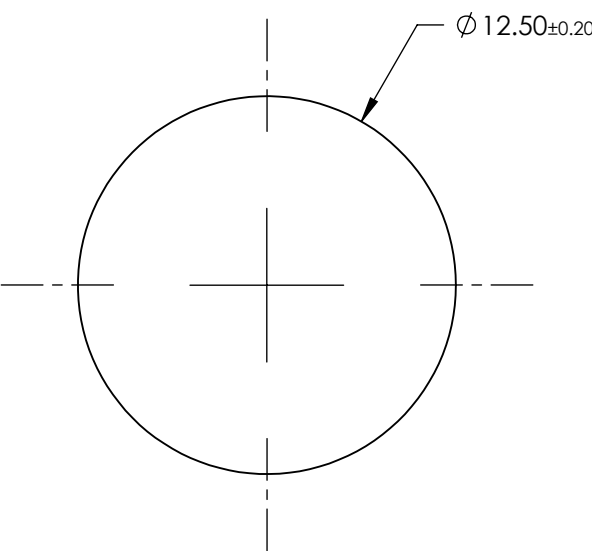
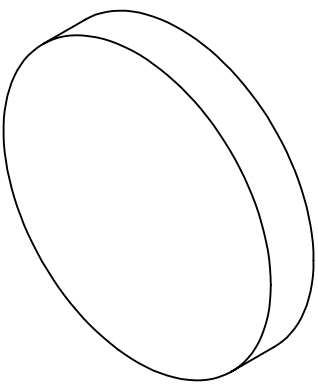


NOTES:

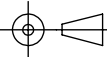
- 1. SUBSTRATE:  
CP42HE Laminated Between Glass
- 2. OPERATING TEMPERATURE: -40 to +80 °C
- 3. COATING (APPLY ACROSS CLEAR APERTURE)  
  
S1 & S2: VIS AR Coated  
Ravg <0.5% @ 425 - 700nm
- 4. EFFICIENCY OF LINEAR COMPONENT: >99.90 %
- 5. WAVELENGTH RANGE: 425 - 700 nm
- 6. ROHS COMPLIANT



**FOR INFORMATION ONLY:  
DO NOT MANUFACTURE  
PARTS TO THIS DRAWING**

SPECIFICATIONS SUBJECT TO CHANGE WITHOUT NOTICE  
DIMENSIONS ARE FOR REFERENCE ONLY

**EO<sup>®</sup> Edmund Optics<sup>®</sup>**

THIRD ANGLE PROJECTION 		TITLE	12.5mm Dia. Left-Handed VIS-Coated Glass Circular Polarizer (CP42HE)	
ALL DIMS IN	mm	DWG NO	19932	SHEET 1 OF 1