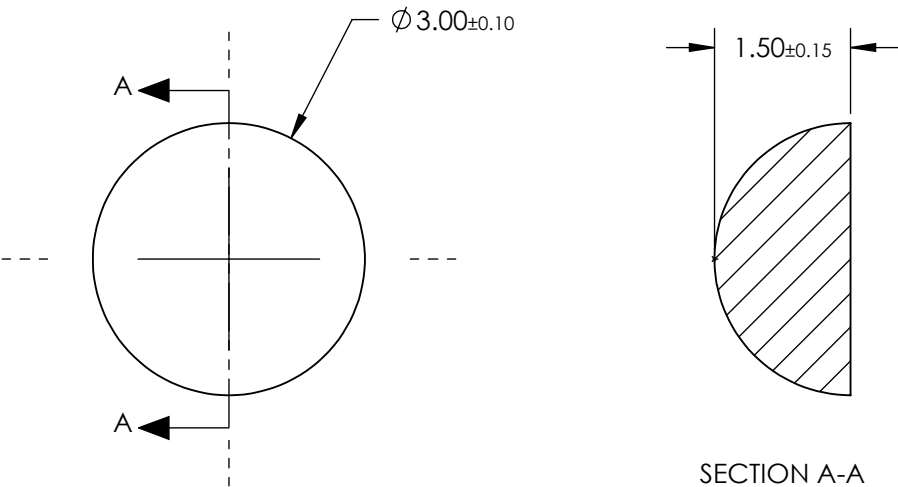


NOTES:
1. SUBSTRATE:
B270

2. COATING (APPLY ACROSS CLEAR APERTURE)

S1 & S2: NONE



**FOR INFORMATION ONLY:
DO NOT MANUFACTURE
PARTS TO THIS DRAWING**

SPECIFICATIONS SUBJECT TO CHANGE WITHOUT NOTICE
DIMENSIONS ARE FOR REFERENCE ONLY

THIRD ANGLE PROJECTION		Edmund Optics®	
ALL DIMS IN		TITLE	3mm Diameter, B270 Half-Ball Lens
mm	DWG NO	21896	SHEET 1 OF 1