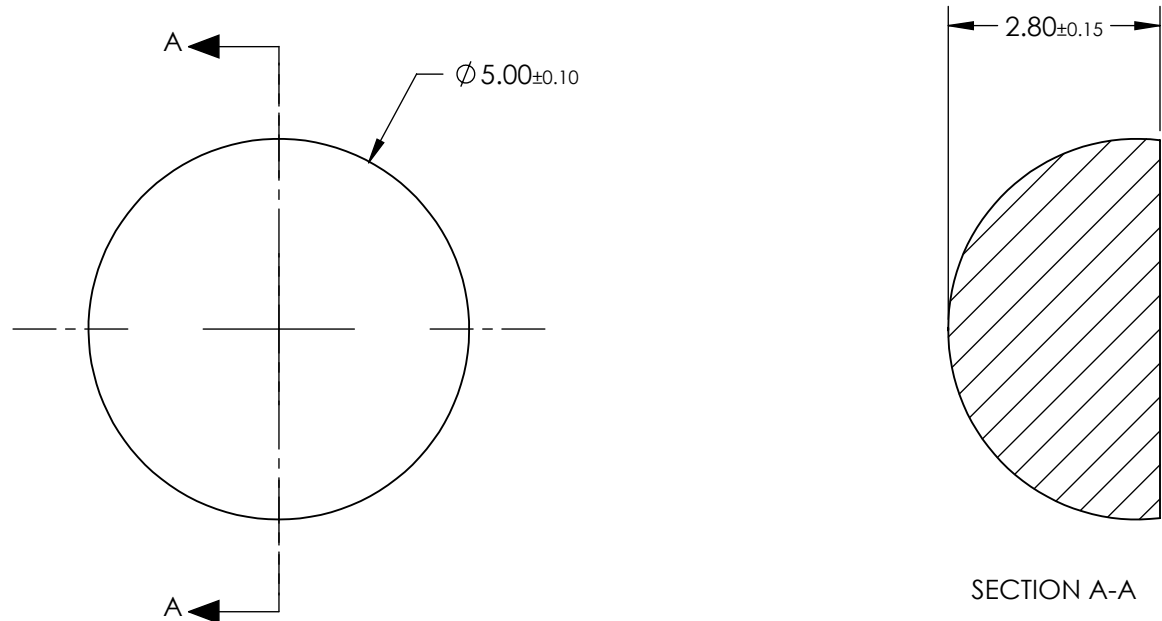


NOTES:  
1. SUBSTRATE:  
B270  
  
2. COATING (APPLY ACROSS CLEAR APERTURE)  
  
S1 & S2: NONE



**FOR INFORMATION ONLY:  
DO NOT MANUFACTURE  
PARTS TO THIS DRAWING**

SPECIFICATIONS SUBJECT TO CHANGE WITHOUT NOTICE  
DIMENSIONS ARE FOR REFERENCE ONLY

THIRD ANGLE PROJECTION 		 Edmund Optics®	
TITLE		5mm Diameter, Extended B270 Half-Ball Lens	
ALL DIMS IN	mm	DWG NO	SHEET
		21904	1 OF 1