

100mm, IR 940nm, MicroBrite Brightfield Ring Light

See More by [Advanced Illumination](#)



Stock #18-580 [CONTACT US](#)

1 C\$1,743^{.00}

ADD TO CART

Volume Pricing	
Qty 1+	C\$1,743.00 each
Need More?	Request Quote

Product Downloads	
STEP:step	PDF Drawing:pdf
IGES:igs	Spec Sheets:pdf
eDrawing:eprt	
EO Spec Sheet	Download All

General

Model Number:	RL208M-100940IC	LED Lifetime (hours):	50,000
Type of Illumination:	LED Illuminator	Note:	Optional Manual Intensity Adjustment #86-887 and #89-555 are Available
Manufacturer:	Advanced Illumination	Geometry:	Ring Light
Illumination Mode:	Constant		

Physical & Mechanical Properties

Height (mm):	19.09	Inner Diameter (mm):	100
Outer Diameter (mm):	145.34	Dimensions (mm):	100.00 x 145.34 x 19.09
Weight (g):	400		

Optical Properties

Color:	IR	Wavelength (nm):	940
---------------	----	-------------------------	-----

Electrical

Maximum Input Current:	0.24A		
-------------------------------	-------	--	--

Hardware & Interface Connectivity

Connector:	Flying Leads	Input Voltage (V):	24V
Power Supply:	Power Supply Required and Sold Separately: USA: #66-855 Europe: #66-		

855
 Japan: #89-513
 Korea: Not Available
 China: #66-855

Threading & Mounting

Mounting Threads: M4 x 4

Environmental & Durability Factors

Operating Temperature (°C): 0 - 60

Environmental Rating: IP50

Regulatory Compliance

RoHS 2015: [Exempt](#)

Certificate of Conformance: [View](#)

Reach 233: [Contains SVHC\(s\)](#)

Product Details

- High Intensity Output up to 41,000 Lux
- 2"-10" Working Distance (Size Dependent)
- Full Range of Wavelengths Available
- Optional Manual Intensity Adjustments ([#86-887](#) and [#89-555](#)) Recommended

Advanced Illumination MicroBrite Brightfield Ring Lights offer high intensity machine vision lights in a compact form factor. These ring lights produce an intense light output up to 41,000 Lux at a working distance of 180mm, are available in a full range of wavelengths, and are offered in two standard sizes. These ring lights provide object coverage from 2" to 6" depending on working distance. Advanced Illumination MicroBrite Brightfield Ring Lights are ideal for standard, around-the-lens applications requiring high-intensity illumination sources such as high-speed inspections, factory automation, and machine vision.

Note: Requires 24V power supply [#66-855](#). Manual Intensity Adjustment [#86-887](#) and [#89-555](#) are recommended and sold separately.

3D-Printable Mount Files



Ring Light Configuration

[Download Now](#)

Designed for use with the [Articulating Arm Mounting Systems](#), these 3D-printed mounts allow easy positioning of lights in brightfield or darkfield setups. The design is based on mounting illumination to ¼-20" breadboards or into 80/20 extrusion systems, but can be adapted based on user needs. Mounts are available for ring, bar, line, and inline spot lights.

Application Note

Illumination Mounts for Machine Vision Applications
[Read >>](#)

Video

Assembly of 3D Printed Mounts for Common Illumination Geometries
[Watch >>](#)

Accessories

Note: Compatible accessories for individual stock numbers may vary. If unsure about which accessories work with your products, please contact us [here](#).

	Title	Compare	Stock Number	Price	Buy
MORE+	24V Power Supply with Tinned Leads		#66-855	C\$133.00 Request Quote	6 In Stock <input type="text" value="1"/>

	Title	Compare	Stock Number	Price	Buy
MORE+	Manual Intensity Adjustment for AI Lights		#86-887	C\$38.85 Request Quote	9 In Stock <input type="text" value="1"/>
MORE+	Industrial DIN Mountable Intensity Adjustment		#89-555	C\$201.60 Request Quote	5 In Stock <input type="text" value="1"/>

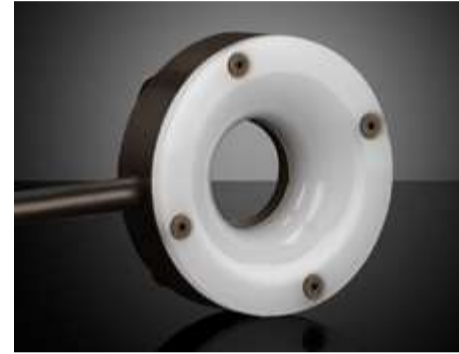
Related Products



Advanced Illumination
Brightfield/Darkfield LED
Ring Lights



SCHOTT VisiLED UV Ringlights



Advanced Illumination MicroBrite
Diffuse Darkfield Ring Lights

Frequently Purchased Together



#66-855 - 24V Power Supply with
Tinned Leads
C\$133.00



#86-887 - Manual Intensity
Adjustment for AI Lights
C\$38.85



#18-546 - IR 940nm, MicroBrite
Ultra High Intensity Bar Light
C\$875.00

Resources

Media Type

- Technical Tool
- Application Note
- FAQ
- Glossary
- Video
- Published Article

TECHNICAL TOOL

Illumination
Spot Size
Calculator

APPLICATION NOTE

Common
Illumination
Types

APPLICATION NOTE

Using
Structured
Illumination

? FAQ

What is ripple
in illuminators
and how does
it affect my...

? FAQ

What is the
advantage of
high frequency
illumination?

? FAQ

What are the
advantages of
LED
illumination?



[View More](#)

;