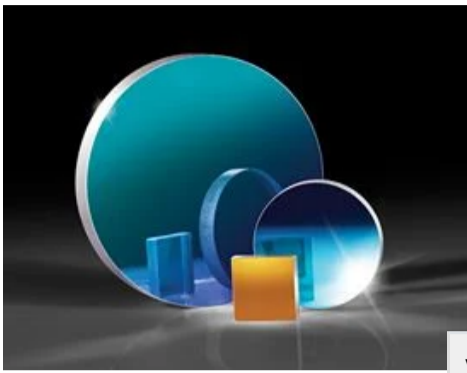


TECHSPEC® 10mm Square Enhanced Aluminum Coated, $\lambda/10$ Mirror



Stock #64-010 [CONTACT US](#)

1 C\$129^{.50}

ADD TO CART

| Volume Pricing | |
|----------------|-------------------------------|
| Qty 1-5 | C\$129.50 each |
| Qty 6-25 | C\$103.60 each |
| Qty 26-49 | C\$97.30 each |
| Need More? | Request Quote |

| Product Downloads | |
|-------------------|------------------------------|
| STEP:step | Curve:pdf |
| PDF Drawing:pdf | IGES:igs |
| eDrawing:eprt | |
| EO Spec Sheet | Download All |

General

Type: Flat Mirror

Physical & Mechanical Properties

| | |
|--|---|
| Thickness (mm): 2.00 ±0.20 | Dimensions (mm): 10.0 x 10.0 |
| Back Surface: Commercial Polish | Bevel: Protective as needed |
| Clear Aperture (%): 90 | Dimensional Tolerance (mm): +0.0/-0.20 |
| Edges: Ground | Length (mm): 10.00 |
| Width (mm): 10.00 | Parallelism (arcsec): 30 |

Optical Properties

| | |
|---|---|
| Wavelength Range (µm): 0.45 - 0.65 | Coating Type: Metal |
| Coating: Enhanced Aluminum (450-650nm) | Surface Flatness (P-V): $\lambda/10$ |
| Wavelength Range (nm): 450 - 650 | Substrate: Fused Silica (Corning 7980) |
| Coating Specification: $R_{avg} >95\%$ @ 450 - 650nm | Surface Quality: 20-10 |
| Damage Threshold, Reference: 0.2 J/cm ² @ 532nm, 10ns | |

Regulatory Compliance

RoHS 2015: **Compliant**

Certificate of Conformance: [View](#)

Need different specs or modifications?

Edmund Optics offers comprehensive custom manufacturing services for optical and imaging components tailored to your specific application requirements. Whether in the prototyping phase or preparing for full-scale production, we provide flexible solutions to meet your needs. Our experienced engineers are here to assist—from concept to completion.

Our capabilities include:

- Custom dimensions, materials, coatings, and more
- High-precision surface quality and flatness
- Tight tolerances and complex geometries
- Scalable production—from prototype to volume

Learn more about our [custom manufacturing capabilities](#) or submit an inquiry [here](#).

Product Details

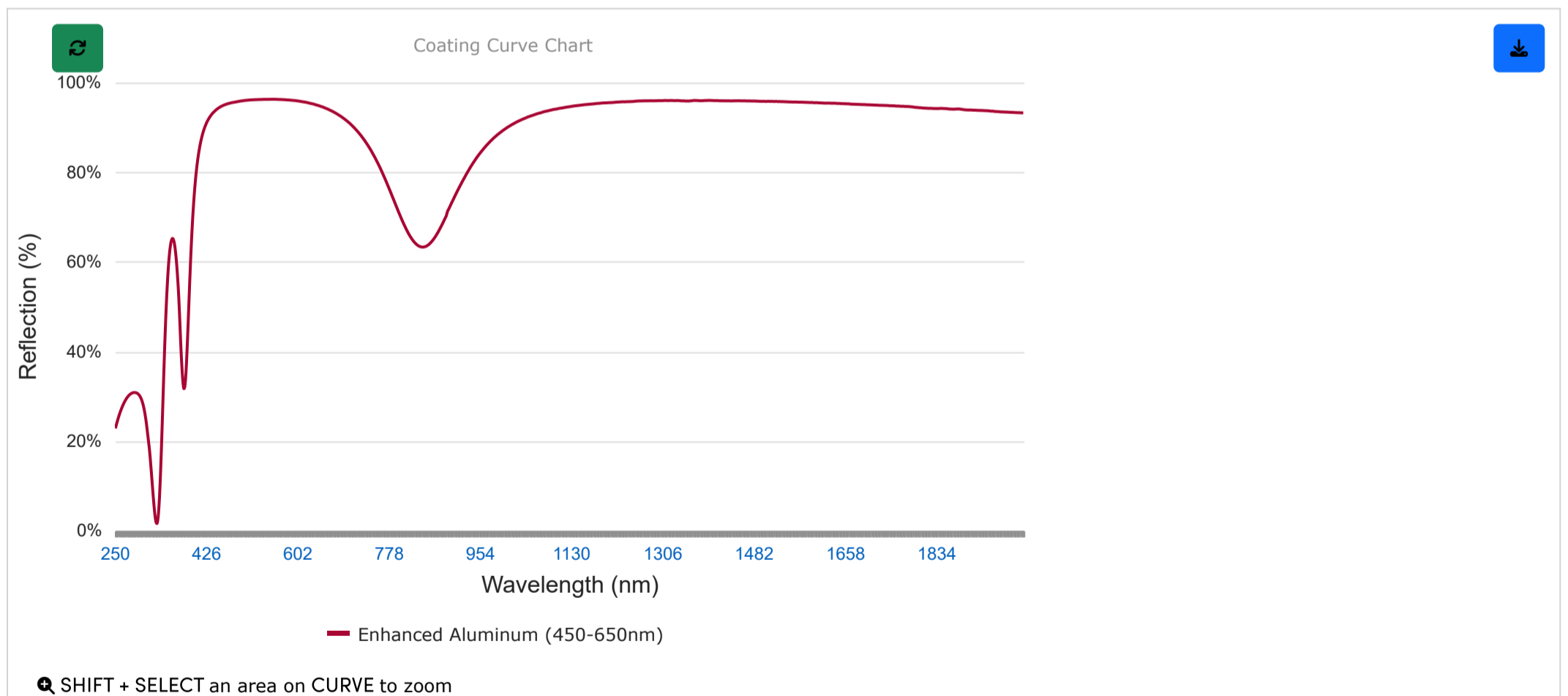
- Precision Fused Silica Substrate
- Variety of Sizes and Coating Options Available
- Low Coefficient of Thermal Expansion

TECHSPEC® $\lambda/10$ First Surface Mirrors are ideal for demanding beam steering and reflection applications in the visible and IR spectra. With a precision fused silica substrate, the mirrors feature a low coefficient of thermal expansion while being highly durable and resistant to abrasion. These precision mirrors are available in a variety of sizes and coating options, including enhanced aluminum, protected gold, and protected silver. These coatings allow for improved handling of the component, increased durability of the metal coating, and protection from oxidation with little impact to the performance on the metal coating. TECHSPEC® $\lambda/10$ First Surface Mirrors can be utilized in various optics and photonics applications, including biotech instruments such as DNA sequencers and polymerase chain reaction (PCR) testing platforms.

Note: Surface flatness is measured before coating.

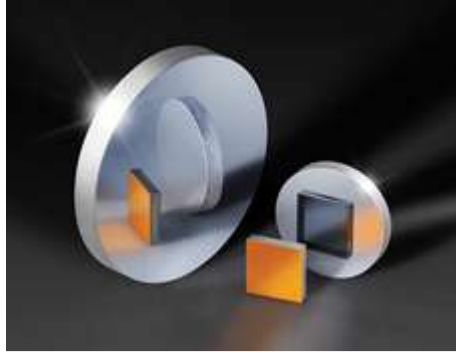
Coating Curves

Enhanced Aluminum (450-650nm)

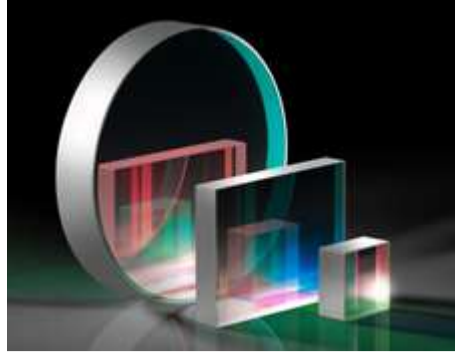


Please note that coating performance outside each product's specified design range is theoretical and may vary.

Related Products



λ/20 First Surface Mirrors



Broadband Dielectric λ/10 Mirrors

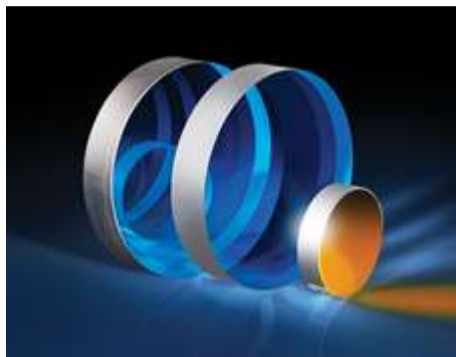


ZERODUR® λ/10 First Surface Mirrors



Optical Mirror Mounts

Frequently Purchased Together



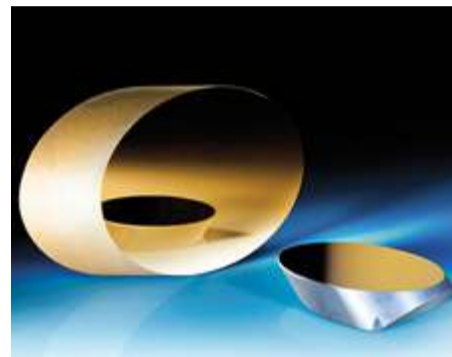
#01-913-533 - 1" Dia. Enhanced Aluminum, λ/10 Flat Fused Silica
C\$231.00

Qty



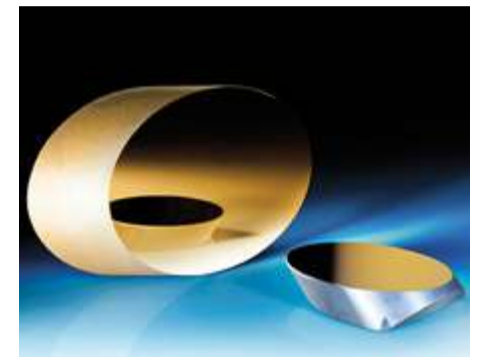
#31-004 - 9 x 9mm, 4-6λ Mirror
C\$26.60

Qty



#32-132 - Elliptical Mirror 26.97mm Minor Axis Enhanced Aluminum
C\$148.40

Qty



#32-271 - Elliptical Mirror 12.7mm Minor Axis Protected Aluminum
C\$128.10

Qty

Compatible Mounts

| | Title | Type | Compare | Stock Number | Price | Buy |
|--|--|-----------------------|---------|--------------|--|---|
| | 1.5" Reverse Angle Mirror Mount | Adjustable - Tip-Tilt | | #37-922 | C\$120.40 Request Quote | 20+ In Stock <input type="text" value="1"/> |
| | 25mm sq - Rectangular Bar Clamp | Fixed | | #54-994 | C\$151.20 Request Quote | 8 In Stock <input type="text" value="1"/> |
| | 60mm sq - Rectangular Bar Clamp | Fixed | | #54-995 | C\$176.40 Request Quote | 20+ In Stock <input type="text" value="1"/> |
| | Standard Model, Threaded Base - Metric Mirror Mount | Adjustable - Tip-Tilt | | #56-341 | C\$196.00 Request Quote | 20+ In Stock <input type="text" value="1"/> |
| | Standard Model, Slotted Base - Metric Mirror Mount | Adjustable - Tip-Tilt | | #56-342 | C\$196.00 Request Quote | 20+ In Stock <input type="text" value="1"/> |
| | Top-Screw Model, Threaded Base - Metric Mirror Mount | Adjustable - Tip-Tilt | | #56-343 | C\$260.40 Request Quote | 4 In Stock <input type="text" value="1"/> |
| | Top-Screw Model, Slotted Base - Metric Mirror Mount | Adjustable - Tip-Tilt | | #56-344 | C\$260.40 Request Quote | 20+ In Stock <input type="text" value="1"/> |

Check out our full selection of mounts [here](#).

Resources

Media Type

- Application Note
- Video
- FAQ
- Glossary

📄 CASE STUDIES

Laser Optics
for Eye
Surgery

↑ TRENDING IN OPTICS

Increasing
Challenges for
Sourcing Laser
Optics...

📄 CASE STUDIES

Using IR
Spectroscopy
for Counterfeit
Drug Detection

📄 APPLICATION NOTE

Metallic Mirror
Coatings

▶ VIDEO

Optical Mirrors
Review

? FAQ

What is the
difference
between a
first-surface...

[View More](#)