

TECHSPEC® 116mm Dia x 1524.7mm FL Achromatic Lens, Mtd



Stock #54-568 **3 In Stock**

⊖ 1 ⊕ C\$2,086⁰⁰

ADD TO CART

Volume Pricing	
Qty 1-5	C\$2,086.00 each
Qty 6-25	C\$1,771.00 each
Qty 26-49	C\$1,666.00 each
Need More?	Request Quote

Product Downloads

General

Achromatic Lens **Type:**

Physical & Mechanical Properties

116.00 +0.00/-0.12 **Diameter (mm):**

98.00 **Clear Aperture CA (mm):**

5.00	Centering (arcmin):
12.37	Center Thickness CT 1 (mm):
8.76	Center Thickness CT 2 (mm):
-2169.77	Radius R₄ (mm):
23.35	Edge Thickness ET (mm):
Mounted, Airspaced 0.10mm	Construction:
Protective as needed	Bevel:

Optical Properties

1,524.73	Effective Focal Length EFL (mm):
±1	Focal Length Tolerance (%):
1514.53	Back Focal Length BFL (mm):
587.6	Focal Length Specification Wavelength (nm):
908.13	Radius R₁ (mm):
-626.59	Radius R₂ (mm):
-625.40	Radius R₃ (mm):
N-BK7 / N-SF2	Substrate:
60-40	Surface Quality:
14.9	f#:
0.03	Numerical Aperture NA:
MgF ₂ (400-700nm)	Coating:
R _{avg} ≤ 1.75% @ 400 - 700nm	Coating Specification:
400 - 700	Wavelength Range (nm):

Threading & Mounting

28.35	Mount Thickness (mm):
M112 x 1.0	Mounting Threads:

Regulatory Compliance

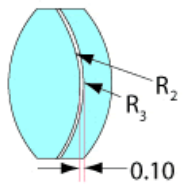
View	Certificate of Conformance:
----------------------	------------------------------------

Product Details

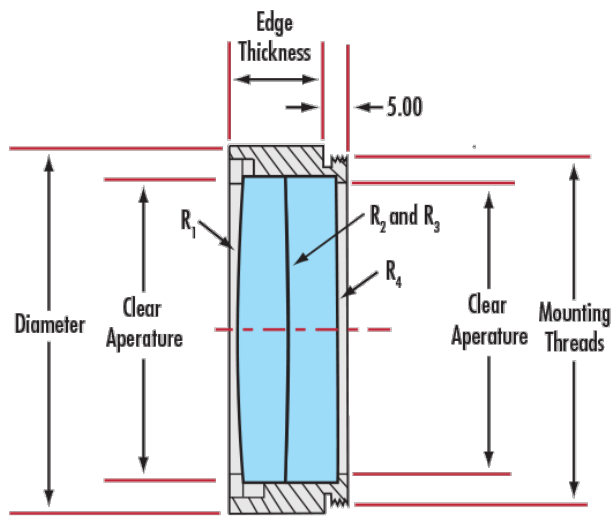
- Offered in Cemented or Air-Spaced Designs
- Mounted Versions Available for Easy Integration
- Feature MgF₂ Anti-Reflection Coating

TECHSPEC® Large Precision Achromatic Lenses offer near-diffraction limited performance across the designated wavelength range. These color-corrected achromatic lenses feature long focal lengths and are available in either cemented or air-spaced designs. The lenses have a MgF₂ anti-reflection coating and are available in diameters up to 140mm. TECHSPEC® Large Precision Achromatic Lenses, in the mounted version, feature a male mounting thread for easy integration into optical systems. Adhesive foil spacers and mounting instructions are included for unmounted, air-spaced achromatic lenses.

Technical Information



Airspaced



Coating Curves