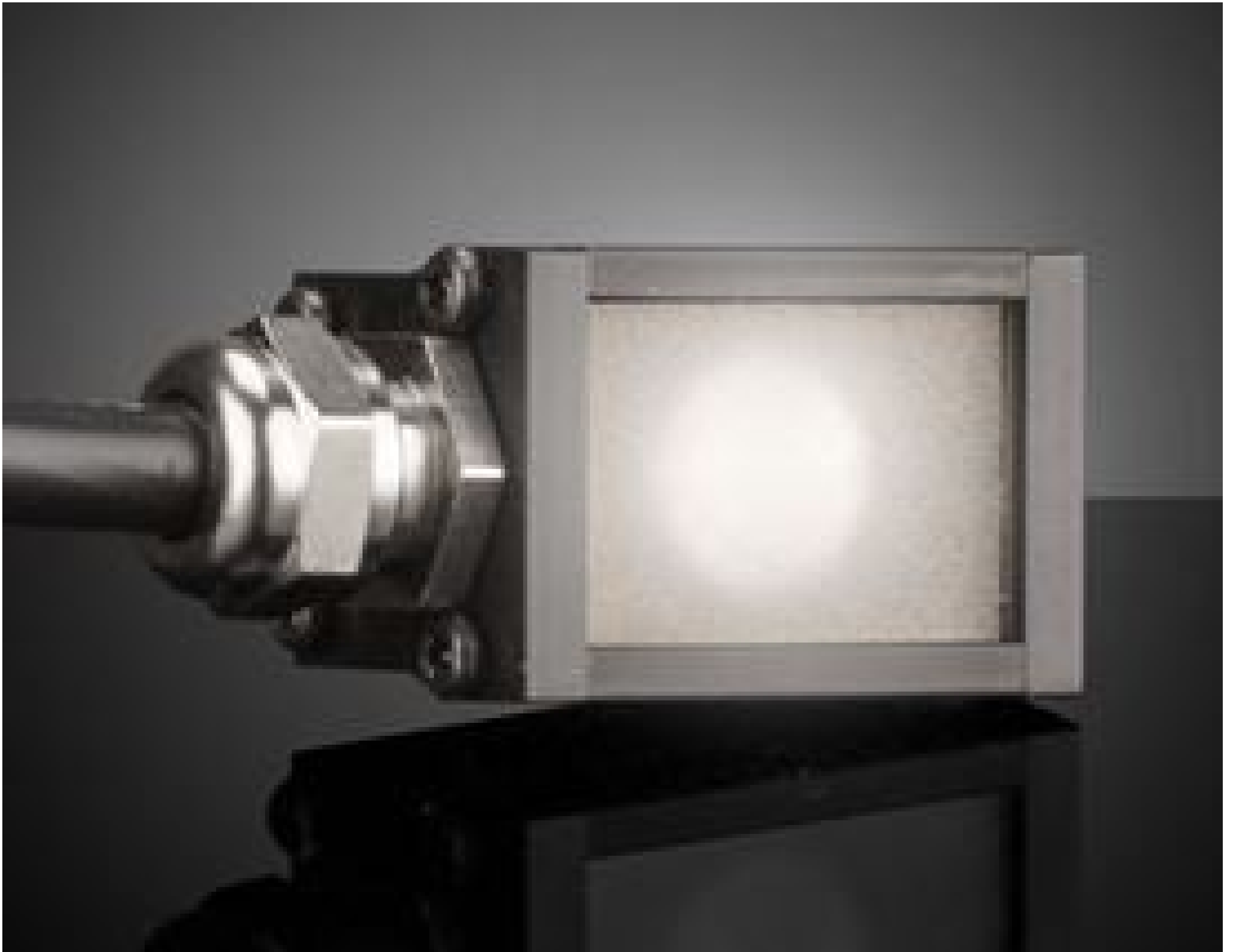


[See all 10 Products in Family](#)

## 0.8" x 1.0", Green 530nm, MicroBrite Compact Spot Light

See More by [Advanced Illumination](#)



Advanced Illumination MicroBrite Compact Spot Lights

Stock **#18-584** **1 In Stock**

⊖ 1 ⊕ C\$560<sup>00</sup>

**ADD TO CART**

Volume Pricing	
Qty 1+	C\$560.00 each
Need More?	<a href="#">Request Quote</a>

### Product Downloads

### General

SL243-530IC **Model Number:**

50000 **LED Lifetime (hours):**

LED Illuminator **Type of Illumination:**

**Note:**  
Optional Manual Intensity Adjustment [#86-887](#) and [#89-555](#) are Available

Advanced Illumination

Manufacturer:

Spot Light

Geometry:

Constant

Illumination Mode:

## Physical & Mechanical Properties

31.8 x 20.5 x 20.5

Dimensions (mm):

24

Weight (g):

## Optical Properties

Green

Color:

530

Wavelength (nm):

## Electrical

0.19A

Minimum Input Current:

## Hardware & Interface Connectivity

Flying Leads

Connector:

Power Supply Required and Sold Separately.

Power Supply:

USA: [#66-855](#)  
Europe: [#66-855](#)  
Japan: [#89-513](#)  
Korea: [#33-773](#)  
China: [#66-855](#)

2

Length of Cable (m):

## Environmental & Durability Factors

0 to +60

Operating Temperature (°C):

## Regulatory Compliance

[Exempt](#)

RoHS 2015:

[View](#)

Certificate of Conformance:

[Contains SVHC\(s\)](#)

Reach 233:

## Product Details

- Light Output up to 15,000 Lux
- Rectangular Housing with Small Footprint
- [MicroBrite High Intensity Spot Lights](#) Also Available
- Optional Manual Intensity Adjustments ([#86-887](#) and [#89-555](#)) Recommended

Advanced Illumination MicroBrite Compact Spot Lights provide industry leading performance to size ratio and intense illumination up to 15,000 lux in a compact, rectangular housing. These spot lights feature side cable entries and strategically placed M4 T-slot mounting points, allowing for improved heat dissipation through conduction. Compared to round format spot lights, these MicroBrite Compact Spot Lights can efficiently house more LEDs, allowing for increased power in a small footprint. Advanced Illumination MicroBrite Compact Spot Lights are ideal for machine vision applications with small footprint such as small-parts manufacturing and micromachining.

**Note:** Requires 24V power supply [#66-855](#). Manual Intensity Adjustment [#86-887](#) and [#89-555](#) are recommended and sold separately.