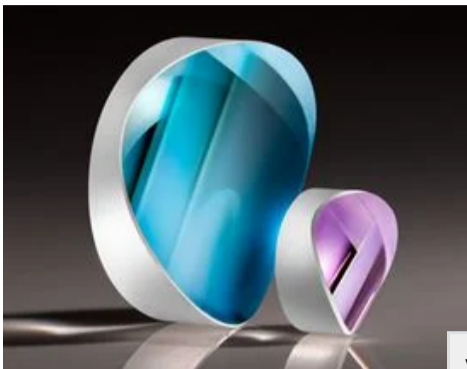


# TECHSPEC® 12.5mm Dia x 10mm FL Acylinder Lens, MgF<sub>2</sub> Coated



TECHSPEC Acylinder Lenses

Stock #86-034 3 In Stock

1 C\$994<sup>.00</sup>

**ADD TO CART**

Volume Pricing	
Qty 1-5	C\$994.00 each
Qty 6-25	C\$795.20 each
Qty 26-49	C\$733.60 each
Need More?	<a href="#">Request Quote</a>

Product Downloads	
STEP:step	PDF Drawing:pdf
IGES:igs	Zemax:zar
Zemax:zmx	eDrawing:eprt
Code V:seq	EO Spec Sheet
<a href="#">Download All</a>	

## General

**Type:** Acylinder Lens

## Physical & Mechanical Properties

<b>Diameter (mm):</b>	12.50 +0.0/-0.1	<b>Center Thickness CT (mm):</b>	6.00
<b>Center Thickness Tolerance (mm):</b>	±0.1	<b>Clear Aperture (%):</b>	90.00
<b>Edge Thickness ET (mm):</b>	2.8		

## Optical Properties

<b>Effective Focal Length EFL (mm):</b>	10.00	<b>Substrate:</b> <b>N-SF5</b>	
<b>f/#:</b>	0.8	<b>Numerical Aperture NA:</b>	0.63
<b>Coating:</b>	MgF <sub>2</sub> (400-700nm)	<b>Wavelength Range (nm):</b>	400 - 700
<b>Back Focal Length BFL (mm):</b>	6.4	<b>Coating Specification:</b>	R <sub>avg</sub> ≤ 1.75% @ 400 - 700nm
<b>Focal Length Specification Wavelength (nm):</b>	587.6	<b>Surface Accuracy, RMS (µm):</b>	1.0
<b>Surface Quality:</b>	60-40		

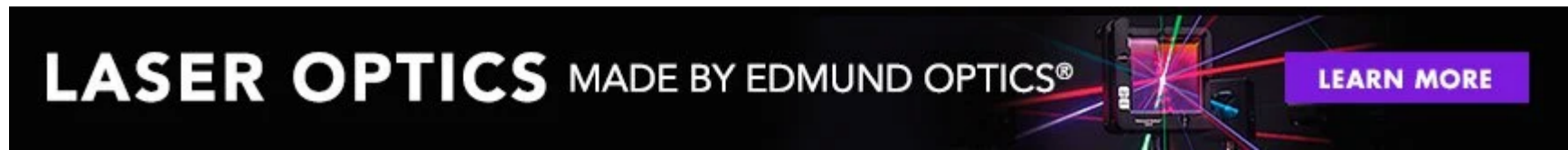
## Regulatory Compliance

RoHS 2015: <b>Compliant</b>	Certificate of Conformance: <b>View</b>
Reach 235: <b>Compliant</b>	

## Product Details

- Diffraction Limited Design
- Ideal for Creating Thin Line Profiles of Monochromatic Light Sources
- Focus Light in Single Dimension

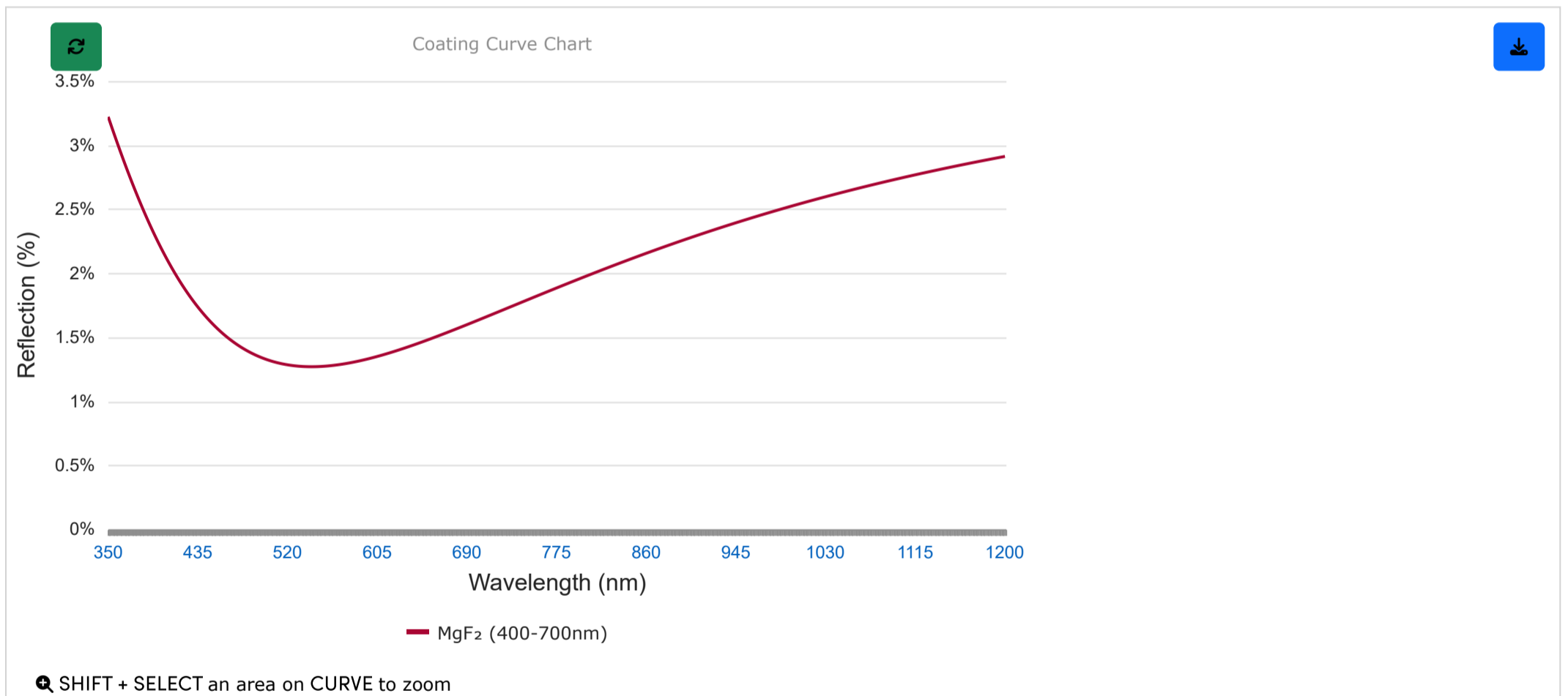
TECHSPEC® Acylinder Lenses are similar to aspheric lenses in that they provide diffraction-limited focusing performance in only one dimension. By reducing spherical aberration along the focusing axis, TECHSPEC® Acylinder Lenses are ideal for creating thin line profiles. Compared to standard cylinder lenses, TECHSPEC® Acylinder Lenses also dramatically reduce the spot size of monochromatic light sources to provide sharp, thin lines.



## Technical Information

### Coating Curves

MgF<sub>2</sub> (400-700nm)



Please note that coating performance outside each product's specified design range is theoretical and may vary.

## Related Products



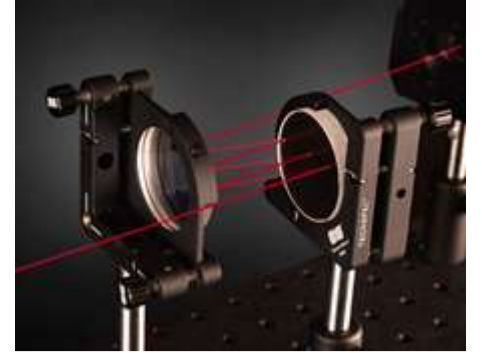
Aspheric Lenses



Cylinder Lenses



Specialty Cylinder Lenses



Laser Optics

## Frequently Purchased Together



#48-353 - 12.5mm Dia x 25mm FL  
MgF<sub>2</sub> Coated, Illumination Grade  
PCX Cylinder Lens  
C\$122.50

#48-354 - 12.5mm Dia x 50mm FL  
MgF<sub>2</sub> Coated, Illumination Grade  
PCX Cylinder Lens  
C\$122.50

#03-676 - 7.0 - 40.0 Optic Height,  
English Bar-Type Optic Holder  
C\$148.40

#47-713 - 30mm Dia. x 50mm FL,  
VIS 0° Coated, Achromatic Lens  
C\$219.80

## Resources

### Media Type

- Application Note
- FAQ
- Glossary
- Video
- Trending in Optics
- Published Article
- Scientific Paper

#### APPLICATION NOTE

An Introduction to Optical Coatings

#### APPLICATION NOTE

Lens Geometry Performance Comparison

#### CASE STUDIES

Laser Optics for Eye Surgery

#### APPLICATION NOTE

Laser Beam Shaping Overview

#### APPLICATION NOTE

All About Aspheric Lenses

#### WEBINARS

Design Considerations for Custom Aspheres

[View More](#)

